

PRT-GX-SRVR

ProtegeGX System Management Suite

Release Notes | Version 4.3.261

ICTProtegeGX[®]

The specifications and descriptions of products and services contained in this document were correct at the time of printing. Integrated Control Technology Limited reserves the right to change specifications or withdraw products without notice. No part of this document may be reproduced, photocopied, or transmitted in any form or by any means (electronic or mechanical), for any purpose, without the express written permission of Integrated Control Technology Limited. Designed and manufactured by Integrated Control Technology Limited. Protege® and the Protege® Logo are registered trademarks of Integrated Control Technology Limited. All other brand or product names are trademarks or registered trademarks of their respective holders.

Copyright © Integrated Control Technology Limited 2003-2018. All rights reserved.

Last Published: 04-Apr-2019 09:15

Contents

Introduction	6
Important Note on Software / Firmware Compatibility	6
Supported Operating Systems	7
SQL Server Compatible Versions	7
Firmware Versions	7
Upgrading to the Latest Build	8
Updating Firmware	9
Updating Firmware from the ProtegeGX User Interface	9
ProtegeGX Software Version 4.3.261	10
New Features (4.3.261)	10
ProtegeGX User Interface Refresh	10
System Navigator	12
Enhanced Communication Security	13
Language Support	13
Feature Enhancements (4.3.261)	14
Issues Resolved (4.3.261)	15
ProtegeGX Web Client (1.47.0.7)	16
New Features	16
Feature Enhancements	16
Issues Resolved	16
ProtegeGX SOAP Service (1.5.0.31)	16
New Features	16
Feature Enhancements	16
Issues Resolved	16
ProtegeGX Data Sync Service (2.0.6.3)	17
New Features	17
Feature Enhancements	17
Issues Resolved	17
Previous Software Release History	18
Version 4.2.251	18
New Features (4.2.251)	18
Issues Resolved (4.2.251)	21
ProtegeGX Web Client (1.45.0.7)	23
Version 4.2.228	23
New Features (4.2.228)	23

Issues Resolved (4.2.228)	25
ProtegeGX Web Client (1.44.0.46)	25
ProtegeGX SOAP Integration Service (1.5.0.24)	26
ICT Data Sync Service (2.0.4.0)	26
Version 4.2.216	27
New Features (4.2.216)	27
Feature Enhancements (4.2.216)	28
Issues Resolved (4.2.216)	29
Version 4.2.201	29
New Features (4.2.201)	29
Feature Enhancements (4.2.201)	30
Issues Resolved (4.2.201)	31
Version 4.2.194	32
New Features (4.2.194)	32
Feature Enhancements (4.2.194)	33
Issues Resolved (4.2.194)	33
Version 4.2.187	34
New Features (4.2.187)	34
Feature Enhancements (4.2.187)	34
Issues Resolved (4.2.187)	35
Version 4.2.181	36
New Features (4.2.181)	36
Feature Enhancements (4.2.181)	37
Issues Resolved (4.2.181)	38
Version 4.1.158	39
New Features (4.1.158)	39
Feature Enhancements (4.1.158)	39
Issues Resolved (4.1.158)	39
Version 4.1.150	40
New Features (4.1.150)	40
Feature Enhancements (4.1.150)	40
Issues Resolved (4.1.150)	40
Version 4.0.135	41
Feature Enhancements (4.0.135)	41
Issues Resolved (4.0.135)	41
Version 4.0.128	42
New Features (4.0.128)	42
Feature Enhancements (4.0.128)	45
Issues Resolved (4.0.128)	48

Previous Firmware Release History	50
ProtegeGX Controller Firmware Version 2.08.0848	50
New Features (2.08.0848)	50
Issues Resolved (2.08.0848)	50
ProtegeGX Controller Firmware Version 2.08.0843	50
New Features 2.08.0843	50
Feature Enhancements 2.08.0843	50
Issues Resolved 2.08.0843	51
ProtegeGX Controller Firmware Version 2.08.0825	51
New Features (2.08.0825)	51
Feature Enhancements (2.08.0825)	52
Issues Resolved (2.08.0825)	52
Contact	54

Introduction

The purpose of this document is to provide information on the new features and enhancements released with this version of:

- ProtegeGX Software version 4.3.261
- ProtegeGX Web Client version 1.47.0.7
- ProtegeGX SOAP Service 1.5.0.31
- ProtegeGX Data Sync Service 2.0.6.3





This document also includes release history for previous versions.

Important Note on Software / Firmware Compatibility

The release of ProtegeGX version 4 introduced Cross Controller Operations, which enables Controllers to operate as one system and share hardware resources. This makes all physically connected items on a Controller accessible and usable by various functions and records within ProtegeGX. Version 4 also introduced many new features there were unavailable in previous versions.

In order to use these features, you must also be using a ProtegeGX DIN Rail Controller or ProtegeGX PCB Integrated System Controller (PRT-GX-PCB) running firmware version 2.08.583 or above.

If you are running an earlier version of firmware, or if you are using an older PCB Controller (PRT-CTRL-GX), these features are not available. If you are running firmware version 2.08.583 or later with an earlier version of the software, it will result in unexpected operation.

	Firmware 2.08 499 and below	Firmware 2.08.583 and above
Software 3.2.79.x and below	 Cross-Controller operations and new features not available	 Software/Firmware versions incompatible, Controller will not accept programming downloads
Software 4.0.128.8 and above	 Controller download will not be allowed if any cross-controller links are made in Programming. All new features will be ignored.	 Feature available

For more information about Cross Controller Operations and how its functionality affects the operation of ProtegeGX, refer to the ProtegeGX Cross Controller Operations Upgrade Guide. We strongly advise that this document is read through thoroughly before proceeding with the upgrade.

Supported Operating Systems

Operating System	Edition	Architecture
Microsoft Windows 10	Professional, Enterprise	32 / 64-bit
Microsoft Windows 8.1	Professional, Enterprise, Ultimate	64-bit
Microsoft Windows 7	Professional	32 / 64-bit
Microsoft Windows Server 2016	All Editions	64-bit
Microsoft Windows Server 2012	All Editions	64-bit
Microsoft Windows Server 2008 R2 SP1	All Editions	32 / 64-bit

SQL Server Compatible Versions

The ProtegeGX application uses a non-proprietary open SQL database engine to store and share information. ProtegeGX supports SQL 2008, 2012, 2014, 2016 and 2017 in either Standard, Enterprise, or Express editions.

The Express edition is a scaled down, free edition of SQL Server that includes the core database engine and functionality. It provides an alternative to the Standard or Enterprise edition which requires Microsoft licenses.

For your convenience, the setup files for SQL Server 2012 (SP2) are included as part of the full distribution package.

Firmware Versions

The Protege System is a high performance integrated system and to ensure your installations are running at the optimal performance, we recommend that all installed modules utilize the latest firmware releases.

For a complete list of current firmware versions, please refer to the ICT website (<http://www.ict.co/Firmware>).

Firmware updates are available online from the ICT website or through your distribution channel. If you are having difficulty downloading any firmware or finding the appropriate version please contact the ICT support team.

Upgrading to the Latest Build

To upgrade to the latest version, you may be required to uninstall the previous version first. The installer will inform you if this is the case.

1. Prior to performing an upgrade, you should always backup your database:
 - Open the ProtegeGX application and login using an account with administrative permissions or at minimum the ability to perform system functions.
 - Select **Global | Global Settings** from the main menu.
 - Select **Backup Now** under the Main Database Backup options.

Wait for the backup to complete before proceeding.

2. Run the installation:
 - Run the supplied setup file (**setup.exe**) and follow the onscreen instructions.
When the installer is launched, it looks for the previous version of ProtegeGX installed on the local workstation and upgrades it to the latest build.
 - Progress is displayed as the database is upgraded and the application installed.

Detailed installation instructions, should you require them, can be found in the ProtegeGX Installation Guide.

Updating Firmware

Updating controller firmware is carried out from the ProtegeGX user interface.

Warning: PCB and DIN controllers run completely different firmware. **Deploying incorrect firmware to a Controller will result in total failure.** This can be corrected, however the process to do so is time consuming. Please ensure you download and install the correct version.

Updating Firmware from the ProtegeGX User Interface

1. Start the ProtegeGX application and ensure that you have a connection to the controller that you wish to update.
2. From the main menu, select **Sites | Controllers**.
3. Right click on a controller and select **Update Firmware**.
4. Click the [...] button and browse to the supplied firmware (.bin) file.
5. Choose which controller(s) to update by selecting the **Include** option. Only the selected controller(s) will be updated.
6. Click **Update** to commence the firmware update procedure.

The update can take up to 10 minutes per controller to complete. Once complete, the controller is automatically restarted and normal operation resumed.

IMPORTANT NOTE: From firmware build 2.08.884 - on completion of the firmware update a pop up message in the User Interface will display stating **UPDATE INTERRUPTED**. This is expected behavior.

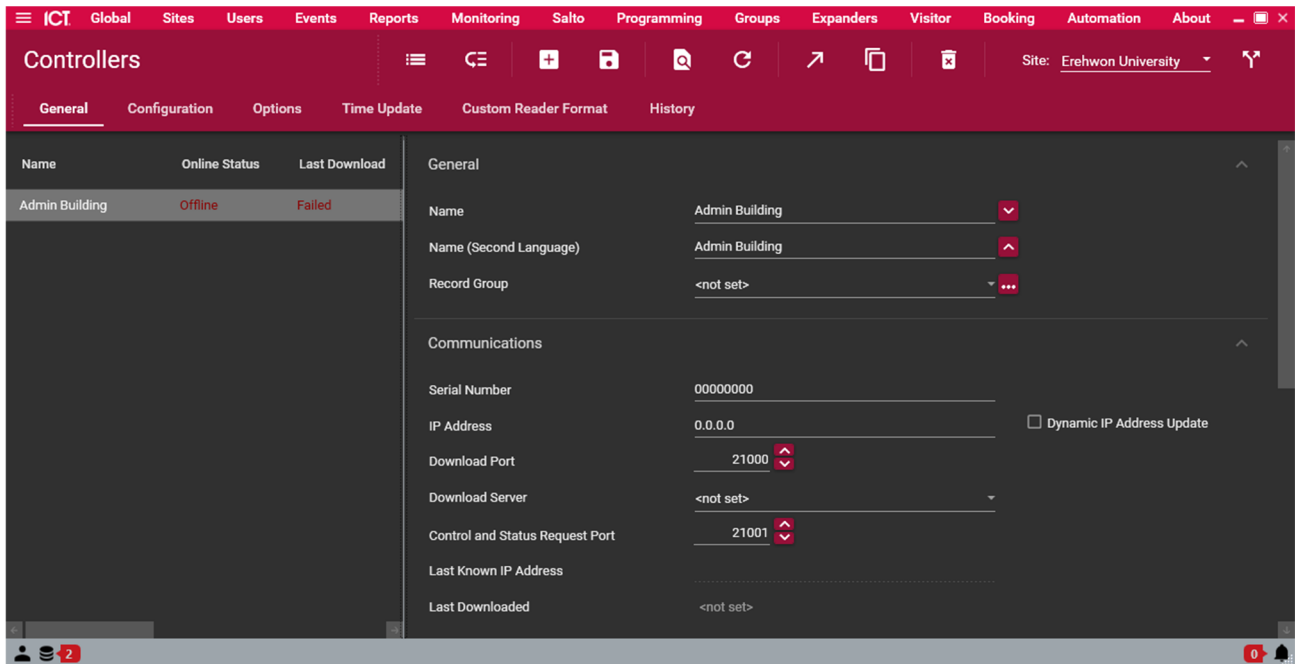
ProtegeGX Software Version 4.3.261

New Features (4.3.261)

The following new features have been included with this release:

ProtegeGX User Interface Refresh

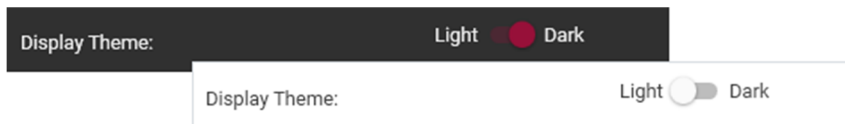
The ProtegeGX User Interface has been completely revamped to utilize Google's Material Design language and concepts. This is a fundamental change and incorporates a number of new design features with a whole new look and feel about it to bring the User Interface in line with current Software, Web page and Mobile Application practices being implemented worldwide.



Items that have changed include:

- Page layouts and color schemes. The whole ProtegeGX color scheme has been changed to match design guidelines and highlights the ICT red color.

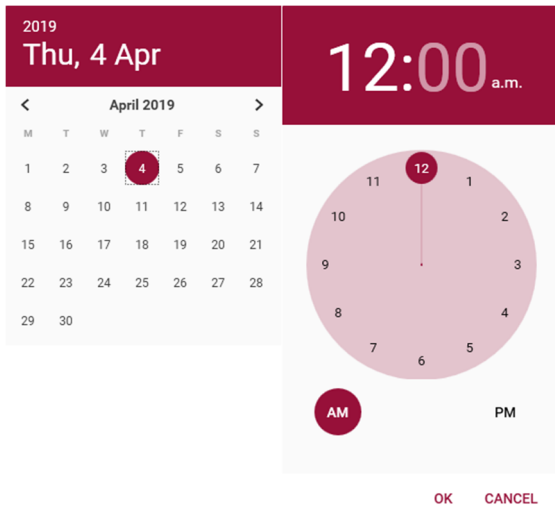
In addition, there are now operator selectable Light and Dark themed variants - selectable from the Home page.



- Button Icons (Save, Add, Refresh etc) have changed to incorporate the icons contained in the Material Design library.



- Time and Date pickers have changed to new easy to use calendar and clock face selectors.



- The slider bar for numerical values has been removed and replaced with Increment/Decrement arrow buttons for easier data entry.

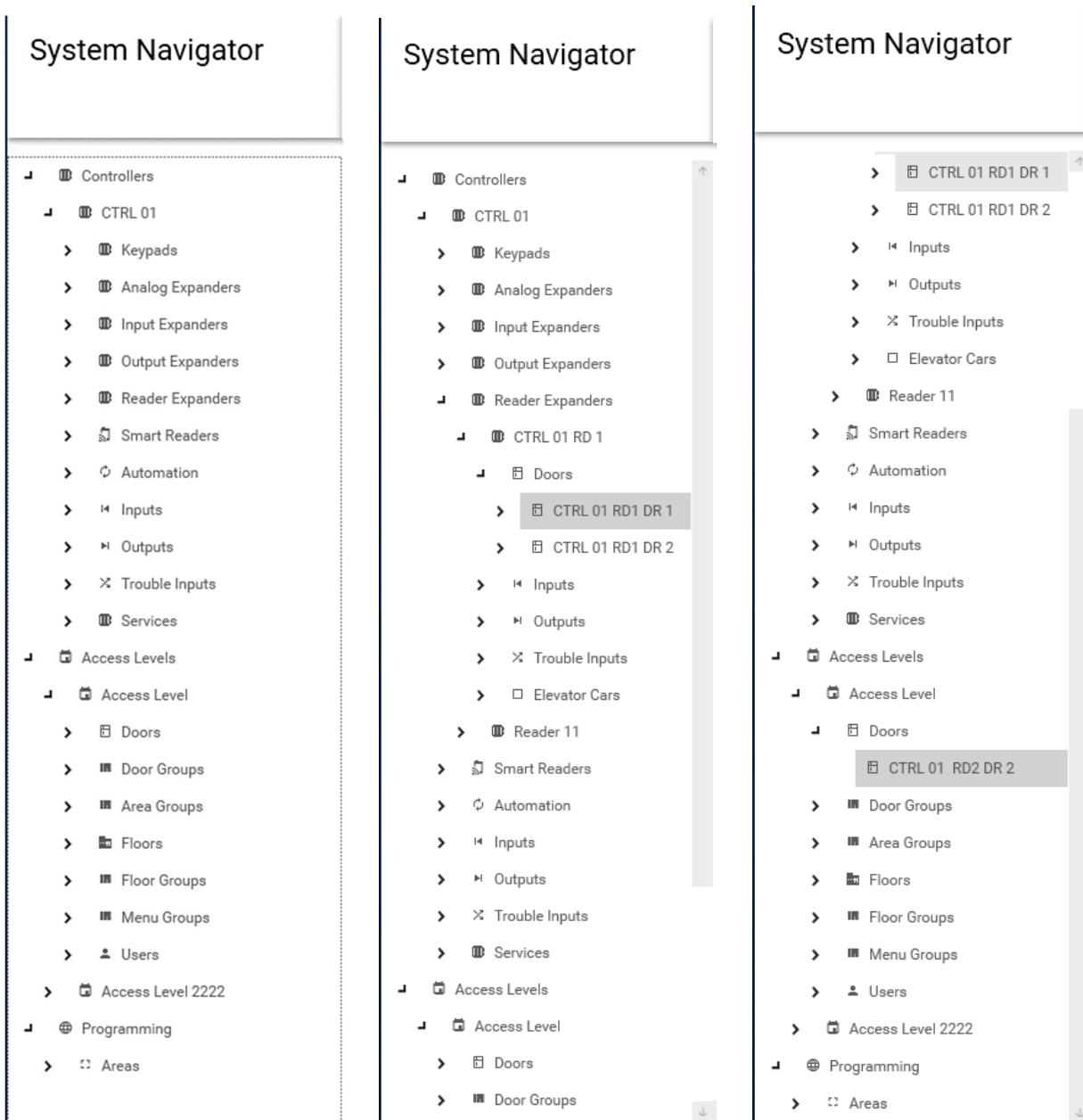


System Navigator

A tree structured System Navigator has been added to provide easy navigation within the system. This gives an operator the ability to navigate the system without using the traditional menu structure. The operator has the option to branch out or hide this tree view at any point, regardless of what page is currently displayed in the ProtegeGX User Interface. Note: The System Navigator window will automatically close when switching between Sites.

The System Navigator is displayed in three main branches (Controllers, Access Levels and Programming), under each of these are the sub level records that pertain to the top branch. For Controllers this includes all the items that are physically or logically attached to the controller record i.e. expanders, Inputs and Outputs, Programmable functions, services etc.

The Access Level branch displays the access levels and the associated records each contains i.e. Doors, Door Groups, Floors, Users etc.



In addition to easy navigation, the System Navigator also gives quick reference to what records are linked to others e.g.

- It displays what Doors are contained by an Access Level.
- It displays what Inputs or Trouble Inputs are linked to an Area.
- It displays what Users are assigned to an Access Level.

Left clicking on any record navigates the Main Interface window to the relevant page and highlights that record. Right clicking on a record will perform the same as above and in addition will open the normal control window (if it exists) for that item.

e.g. Right Clicking on a Door will bring up the Door page, highlighted to the door that was clicked and bring up the Door control window.

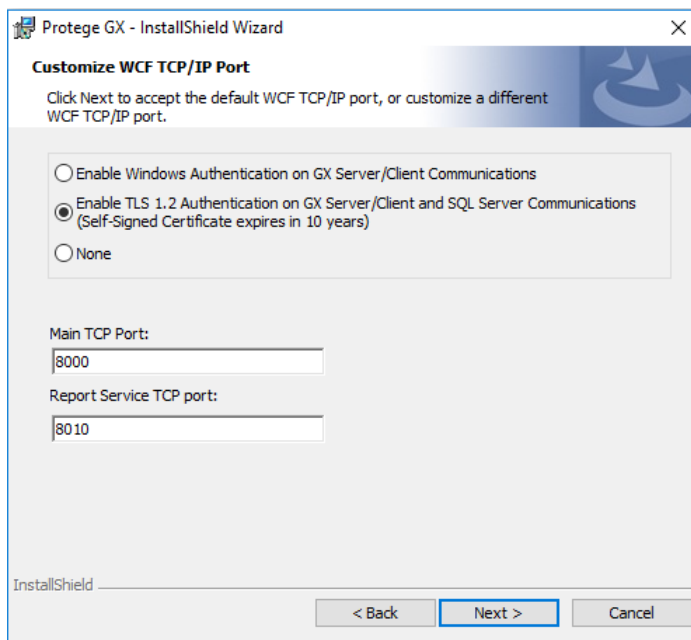
Enhanced Communication Security

Transport Layer Security version 1.2 (TLS 1.2) has been implemented and allows for greater security on communications between the ProtegeGX Data service and SQL, between a workstation client and the ProtegeGX server, and communication to/from the ProtegeGX Web client.

- Transport Layer Security 1.2 is a cryptographic protocol that incorporates certificates and allows digital devices to communicate securely over a network. It is designed to provide privacy and data integrity, plug vulnerabilities and protect against eavesdropping.
- SSL/TLS is used to encrypt the SQL Database connection channel, using dynamically created DB server-side certificates automatically accepted by the ProtegeGX Services by default. Third party certificates can optionally be installed and configured for use.

TLS 1.2 authentication is now the default security setting when you run the ProtegeGX installer. The security options during installation are now:

- Windows Authentication
- TLS 1.2 Authentication
- No Authentication



For detailed instructions on configuring TLS 1.2 please refer to the specific Application Note available on the ICT website (<http://www.ict.co>)

Language Support

Added language support for Czech.

Feature Enhancements (4.3.261)

The following enhancements have been made to existing features in this release:

ProtegeGX Software

Attendance reports

- Attendance report processing and calculations have been improved to handle unexpected or incorrectly sequenced card badges better.

User Reports

- Added a title field for the report similar to Event Reports so the end recipient can easily identify the report being presented.
- Added the Access Level Expiry date as a selectable item to display in a User report.

Card Template Editor

- It is now possible to add any Custom Field to a User card template.

Custom Credential

- Custom Credentials are now checked for duplicate values and an error message will be displayed on saving the user record if a duplicate exists. The default setting for this is "enabled" and this can be turned off for individual credential types where required.

Camera devices on Floor plans

- You can now add a camera device to a floor plan. Clicking the icon will bring up the normal GX camera window for the specific camera selected.

PIN Complexity checking

- On a site where PIN complexity has been enabled with users existing prior to this setting change, when adding a Card number from a RAW read event the User's PIN is checked and an error message displayed if the complexity requirements are not met.

Topaz Signatures

- Signatures imported using a Topaz reader are now formatted with a transparent background. This allows the image to be scaled as much as possible on a Card Template without overlapping and blocking other fields.

Door Statuses

- Door statuses and their icons on a status list have been updated to include the following states:

 Unknown

 Closed and Locked

 Closed and Unlocked (By User, Access, Schedule, Area, Function etc)

 Open and Unlocked (By User, Access, Schedule, Area, Function etc)

 Left Open - Door Sense not sealed

 Left Open - Bond Sense not sealed

 Forced Open

- Operator configurable "Floor Plan Symbol" records have also been updated to include image placeholders for these 7 states.

Issues Resolved (4.3.261)

This release resolves a number of issues relating to the ProtegeGX Software:

ProtegeGX Software

- Fixed an issue where the automatic file export of an Event Report was not working if Days to Export were not set on the "Email" tab of the report setup.
- Fixed an issue where two separate Events reports would be generated if both "Email" and "File Export" settings were enabled.
- Fixed an issue where the controller filter (drop list) would not list newly created controllers that had been added using SOAP or Web client.
- Fixed an issue where the UI would intermittently freeze up when resizing the Door window while adding doors to an Access Level.
- Fixed an issue where the database ID for Trouble Inputs with a ModuleType of "Door" was offset by 1.
- Fixed an issue where when logged in using the second language the copy user function displays a blank list of users to copy from.
- Fixed an issue when exporting controller records where an error window was displayed if the controller name field was selected for export.
- Fixed an issue where the photo holder on a card template would only display on one side of the card although a photo holder on both sides of the card had been applied.
- Fixed an issue where the ModuleAddress and ModuleOutput reference of an output were swapped on records listed using the "Find" tool.
- Fixed an issue where if an access level that contains a Salto door was added to a user more than once, the Salto service would fail to synchronize.
- Fixed an issue where image data was not removed from the database when a new image is uploaded to an image field or when a user with an image loaded was deleted.
- Fixed an issue where a door would not unlock according to the unlock schedule (with a qualify output applied) if the host controller of the door and the host controller of qualify output were not the same.
- Fixed an issue where a card number was able to be added with preceding zeros and this was not triggering a "Duplicate Facility/Card number" error message.
- Fixed an issue where if an event report was run and the time period was set to "Last October", the StartDate and EndDate fields were incorrectly populated with dates in November.
- Fixed an issue where the UI would crash if "Save Report Filter" was selected prior to executing a User report.
- Fixed an issue where a User Report set to run daily with the time period set for "Today (since midnight)" would not automatically update the start time to reflect the current day (since midnight).
- Fixed an issue where Calendar Actions were not visible to operators whose role was set to the preset "End User" role.
- Fixed an issue where an operator, with a role that is assigned the Preset of "Administrator", was unable to create Record Groups. However the Operator was able to delete record groups.
- Fixed an issue where the Alarms page was not sorting alarms by their Alarm Priority correctly.
- Fixed an issue where the event report filter "All Events" displays different columns on a Status Page and a manually executed Event Report.
- Fixed an issue where a Facility Code could be added with leading zeros which was not being picked up as a duplicate Facility/Card error.
- Fixed an issue where certain operator actions would not produce a record in the event log. These included:
 - Adding Biometric readers
 - Changing an event type color
 - Adding Shift types
- Fixed an issue where an Emailed or File Exported User report would not filter by the Record Group set on the report or the Record Group of the Operator record set in "Run report as Operator".
- Fixed an issue where an error message was displayed when navigating to Reports > Setup > User when no User reports already existed.

- Fixed an issue where the User Expiry Date/Time displayed on a card Template was displayed in dd/mm/yyyy regardless of the system Locale and Date/Time setting of PC.
- Fixed an issue where the Download service fails to start on a fresh installation.
- Fixed an issue where Custom Field values from Drop Box lists were missing from User Reports.
- Fixed an issue with the Arkiv Video Service where the list of cameras was not populating.

ProtegeGX Web Client (1.47.0.7)

New Features

The following new features have been included in this release:

- The ProtegeGX Web Client has been completely revamped and updated to match the ProtegeGX User Interface changes outlined earlier in this document.

Feature Enhancements

The following enhancements have been made to existing features in this release:

- Operator Passwords now support the use of the special characters # and &.
- Updated Door Statuses and Icons on status pages.

Issues Resolved

The following issues have been resolved in this release:

- Fixed an issue where changing an Operator password actually changed the Admin Operator password and not the password of the logged in Operator.
- Fixed an issue where the Name and Name2 fields were being switched around when logging in using a secondary language.
- Fixed an issue where User properties were not saved using the Web Client if a Custom Field and Custom Field Tab existed in programming.

ProtegeGX SOAP Service (1.5.0.31)

New Features

The following new features have been included in this release:

- Transport Layer Security (TLS) has been implemented and is now the default security setting when installing the SOAP sync service. See "Enhanced Communication Security" in ProtegeGX New Features earlier in this document for more information.

Feature Enhancements

The following enhancements have been made to existing features in this release:

- Added the ability for the ProtegeGX SOAP service to check the ProtegeGX Data Service in order to validate license requirements.

Issues Resolved

The following issues have been resolved in this release:

- Fixed an issue where the SOAP service installer options of "Modify" or "Repair" would do nothing at all.
- Fixed an issue where SOAP was able to add Doors to a controller that did not exist in the database.

- Fixed an Issue where SOAP was able to insert a schedule record and apply it to another record that did not exist in the database.
- Fixed an issue where door type credential type fields were not exposed in the GetTableSchema API.

ProtegeGX Data Sync Service (2.0.6.3)

New Features

The following new features have been included in this release:

- Transport Layer Security (TLS) has been implemented and is now the default security setting when installing the data sync service. See "Enhanced Communication Security" in ProtegeGX New Features earlier in this document for more information.

Feature Enhancements

The following enhancements have been made to existing features in this release:

- Added an allowance to import Duplicate PINs via Data Sync - if the Site Security settings in ProtegeGX are set to allow PIN Duplication.
- Added the option to set the Resync time in seconds.
- Added an error message when the HostControllerRef field is not mapped for a record that requires it for successful import.

Issues Resolved

The following issues have been resolved in this release:

- Fixed an issue where if an empty data mapping was present the service would wait for the resync time to elapse and attempt to sync the same record type again instead of skipping to the next record type.
- Fixed an issue where the import would fail when assigning a Controller level record to a Site level record (e.g. adding a Door to an Access Level) to a database where there was more than one Site.
- Fixed an issue where the 'Service will restart at...' message was displaying the next sync time incorrectly if the units were set to 'Hours'.
- Fixed an issue where Input Types were not being imported as SOAP was receiving the wrong ParentID.
- Fixed an issue where Door Type Credential Types were being displayed incorrectly.
- Fixed an issue where a 'Restart Sync Failed' exception was raised when records with more than one Unique Field were being synced.

Previous Software Release History

This section includes information on the changes and enhancements made in earlier versions.

Version 4.2.251

New Features (4.2.251)

The following new features have been included with this release.

Additional Lock Outputs

It is now possible to program up to 5 additional Lock Outputs or Output Groups on a door, allowing control of additional locks, indicators, door actuators or opening devices. Each additional output or group can have an individual activation time and individual delay on time. For more information please refer to the ProtegeGX Operator Reference Manual.

User PIN Management - PIN Complexity

ProtegeGX now allows for complexity settings on User PINs within a Site. PINs can now be configured with the following settings to improve security and PIN management:

- Default PIN Length
- Minimum PIN Length
- Maximum Sequential Digits
- Maximum Repetitive Digits

Dual Credential - Visual Feedback

It is now possible via commands to control the color of the reader LED when waiting for a second credential to be presented, e.g. Card & PIN.

This gives a cardholder visual feedback to indicate if the first credential has been read and the reader is waiting for the second credential. Ideal in noisy environments where the beep from the reader can be hard to hear.

Commands set in the Door Type:

- **DualCredPendingOnColor** = x (where x = numerical value for the color as per table below)
- **DualCredPendingOffColor** = x (where x = numerical value for the color as per table below)
- **DualCredPendingOnTime** = x (where x = number of seconds to display OnColor)
- **DualCredPendingOffTime** = x (where x = number of seconds to display OffColor)

Note: Only works on tSec readers with RGB LEDs.

OFF	0
RED	1
AMBER	2
ORANGE	3
YELLOW	4
LIME	5
GREEN	6
MINT	7
TURQUOISE	8
CYAN	9
SKYBLUE	10
COBALT	11
BLUE	12
VIOLET	13
PURPLE	14
MAGENTA	15
CRIMSON	16

Time Settings

Major changes have been made to Time settings and how these operate in ProtegeGX. The ProtegeGX server will continue to take its Time Zone from the system locale setting within the Microsoft Windows Operating System it is installed on. However, Event Logged Time and Acknowledged Time are now stored as UTC time zoned times, and are converted to local times based on the Operator's Time Zone setting, with the following exceptions:

- Live event Actions use the UTC time.
- Field Times remain unchanged and use the local Controller time.
- Send Muster Report by E-mail uses the configured Muster Report's Time Zone.
- Send Attendance Report by E-mail uses the configured Attendance Report's Time Zone.
- Send E-mail will try to match the recipient email address to a known Operator email address, and if found will use the configured Operator's Time Zone.

Descriptions have changed for Time-to-acknowledge, from Field Time --> Acknowledge Time to Logged Time --> Acknowledge Time.

Controller Online and Offline events will use the configured Controller Time Zone setting if NTP is enabled, otherwise these will use the ProtegeGX server time zone.

A read-only Current Server Time field has been added below the Time field for emailed and exported Event, Attendance, Muster and User Reports. It will only be loaded/refreshed on page load.

A 'Time Zone' setting has been added to Operators, Attendance Reports and Muster Reports. The current Use Server Time Zone value will use the current time zone of the ProtegeGX server.

For Operators, the time zone set will only affect what Logged Time and Acknowledged Time is displayed for events.

For Muster Reports and Attendance Reports, the time zone set will determine what the report displays. Currently this is used to resolve ambiguity around what local Field Time should be used for retrospective periods like 'previous half hour' and 'last week'. For example, if a report is run for the previous half hour at 3:15 PM PST with a time-zone setting for EST on the report, the report will use the equivalent local time in the EST time-zone (6:15 PM) to calculate the 'previous half hour' starting from 5:45 PM.

Note: This release only uses the base UTC offset of the time zone and does not adjust for configured Daylight Savings records. Event data prior to upgrade will not be altered but display of this data will be adjusted as though it had been – old event Logged Time and Acknowledged Time will appear to be incorrect.

Video Integrations

ProtegeGX now integrates with the following Video systems:

- Nx Witness
- DVTel (FLIR) v8.0
- Onvision

These integrations enable you to:

- View live video footage from programmed cameras.
- View historic and archived video footage.
- Embed cameras into a status page using the ProtegeGX Status Page Editor.
- Link a camera to a door, an input, an area, or any record using the filter and camera assignment.
- View live or archived video footage directly from an event associated with a camera.
- Launch a camera view window when a specific event occurs.
- View Motion Detected and Camera Input events within ProtegeGX.
- Send PTZ pre-set commands to the NVR system in response to a ProtegeGX event filter.

For detailed instructions on configuring these video integrations, please refer to their specific Application Notes available on the ICT website (<http://www.ict.co>).

Language Support

ProtegeGX is now available with Swedish, Norwegian and Finnish as the second language option.

Feature Enhancements (4.2.251)

The following enhancements have been made to existing features in this release.

Access Level Door Type

- This feature replaces the Override Door Type commands introduced in Controller Firmware 2.08.0822. This now allows for these settings to be configured via a drop-box in the ProtegeGX software on a Door Type and an Access Level.

Access Level Output

- Added the ability for an Access Level Output to be toggled On/Off by successive activation events. When enabled, this setting disables the Time to Activate Output and Activate Output until Access Level Expiry settings.

Access Level Usage Restriction

- This feature replaces the Commands introduced in Controller Firmware 2.08.0822 where an Access Level could be limited to a certain number of Access Granted swipes for a particular time period. This is now able to be set directly on the access level via the ProtegeGX User Interface.

Anti-Passback Reset

- Added the ability to right-click on a user record and Reset Anti-Passback.
- Added the ability to reset Anti-Passback using the ProtegeGX SOAP service.

Apartment Users

- Added the ability to add an Access Level to an Apartment user.

Aperio Integration

- Added a Low Battery Trouble Input for Aperio Locks.

Controller Offline status

- Extended the time before a controller is marked as Offline to a minimum of 1 minute. Configurable up to 60 minutes via the Controller Offline Grace Time setting in Sites | Controllers | Configuration. This reduces the chances of repeated Offline/Online events and possible email alerts for controllers on 'flaky' connections.
- Added a visual Controller Connection Stability bar graph on the controller page. This can be Enabled/Disabled via Global | Sites | Show Controller Stability Bar Graph.

Module Wizard improvements

- Several improvements have been made to the Add Module Wizard. Each specific module within module types can now be selected, for example PRT-ZX16-DIN or PRT-IO84-DIN. The Configure Module pop-up window now presents inputs and outputs for the specific module and the wizard also correctly adds the Trouble Inputs for each individual module.

Status Lists – Elevator Car Floors

- When adding an Elevator Car to a status list, all Floors linked to the Elevator Car are added.

Suprema Integration

- Suprema Biometric Integration has been updated to include support for the FaceStation 2 and BioLite N2 devices.

Issues Resolved (4.2.251)

The following issues have been resolved in this release.

- When adding a user record directly from the event log the photo dimensions and the record history details are now set correctly.
- The date-selection pop up for Attendance reports 'Prompt for date' now works correctly.
- The Save Report Filter button now works correctly for filtered reports.
- Fixed a bug where Zone Bypassing was sometimes being sent to the incorrect controller.
- Reporting services now correctly fall back and restore between Primary and Secondary Reporting services.
- Records are now correctly named when using the Copy Controller wizard.
- Text boxes and descriptions are no longer truncated for languages other than English.
- Camera pop-up for Door Entry requires verification now works correctly.
- Activate Access Level Output is now selectable for Salto Sallis doors/smart readers.
- Elevator with Destination Reporting now correctly denying or granting a user access depending on Area Status.

- Rotated objects on Floor Plans and Card Templates are no longer locked to their original orientation. These can now be easily moved around and placed correctly.
- Fixed errors when multi selecting Trouble inputs to change module address.
- Fixed an issue where record groups were stopping Floors from being added to Access Levels.
- Smart Readers now show in the usage tab of the Doors they are assigned to.
- Adding a signature from a Topaz reader using second language now works correctly.
- Fixed an issue where adding Card details from a Raw Read event incorrectly set the Facility/Card details to 0:0.
- Fixed an intermittent issue when adding an F2F8 module via the wizard where associated items (Doors etc) were not also being added.
- Fixed an issue where controllers added via SOAP were not showing correctly in the drop down and linked items were showing as <not set>.
- Fixed an issue when upgrading from version 4.2.195 or earlier that inadvertently reset Input Type options to default for input types named "Fire" or with the second name of "Fire".

ProtegeGX Web Client (1.45.0.7)

New Features (1.45.0.7)

The following new features have been included with this release.

Reset Anti-Passback

Added the ability to click the + symbol on a user and reset Anti-Passback from presented menu.

Language Support

Added language support for Finnish, Swedish, Romanian and Norwegian.

Access Levels

Added the ability to select a schedule for access levels assigned to a user.

Issues Resolved (1.45.0.7)

The following issues have been resolved in this release:

- ProtegeGX Status pages are now displayed correctly.
- User Photos uploaded from a Webcam via the Web Client are now correctly stored.
- Fixed an issue where operators could not see Event Types in Event Filters.
- Fixed login delay issues for operators with high database IDs.
- Fixed an issue with User Start and Expiry dates defaulting to the creation date. Now defaults to current date.
- Fixed an issue with User Start and Expiry times and Inactivity settings not being copied when copying when using the copy function.

Version 4.2.228

New Features (4.2.228)

The following new features have been included with this release.

User PIN Management - Duplication and Expiry

User PINs have two new management features in the ProtegeGX System:

- Duplication of User PINs is now possible when using another unique identifier (such as an employee code) to identify Users.
- User PINs can now be set to automatically expire and a procedure to select a new PIN is available from LCD keypads.

This can be used in systems that require periodic renewal of User PINs for enhanced security, and large systems where requiring a unique PIN for all Users in the system is not practical. Users will be required to enter their extra identifier (such as Employee ID code) as part of the PIN renewal process. For more information on configuration and operation of this feature, please see the relevant Application Note available on the ICT Website (<http://www.ict.co>).

Event Database Management

ProtegeGX now allows management of the Event Database directly from the User Interface. It can be configured to automatically purge the live database to a backup to manage the amount of space remaining on disk. The purged events can either be permanently deleted or saved to a separate backup file for review at a later date.

Under the Global | Global Settings menu, the Event Database may now be managed with the following settings:

Event Database Settings

- **Purge Events Older Than:** A timeframe can be selected from which to have the server automatically remove events from the current Events database each day (at the selected Purge Start Time).
- **Purge Start Time:** The time of day the Events database purge will be run. Select a time of low system activity to maximize operator experience as the Event Purge process is memory and CPU intensive on the server.
- **Generate Differential Events Backup:** When enabled this option will create a unique backup file for the events that are being purged that can be restored for later review if required.

Event Database Backup Settings

- **Select a backup option:** The Differential backup file can be saved to local disk, Network Drive or FTP location.
- **Event DB Backup Path:** Location of selected backup option where the backup file will be saved.

Periodic Photo Export

User Photos can now be periodically exported to a directory. This feature can be used to share images captured within ProtegeGX with third party systems such as HR or badge printing systems.

The frequency, location and file name options can be configured under Global | Sites | User Photo Export.

User Photo Export can be managed with the following settings:

General Settings

- **Enabled:** Selecting Enabled will allow the Photo Export to run.
- **Export Folder:** The disk location that User Photo files will be saved to.
- **Export Photo Format:** The image format the User Photo files will be saved in.

Schedule Type Settings

- **Start Manually:** The export is required to be started manually using the Export User Photos Now button.
- **One Time:** The export will be run once. If selecting this option, you will also need to enter the start date and time in the One-time Occurrence Start Time field.
- **Recurring:** The export will run on a recurring basis. If selecting this option, you will also need to enter the frequency and duration.

User Access Level Schedule

Schedules can now be added directly to the Access Level on the User and can be configured on the Access Levels tab when navigating to Users | Users.

This feature now provides flexibility for Users that require the access to the same Doors within a selected Access Level, but at different times of day or week.

Feature Enhancements (4.2.228)

The following enhancements have been made to existing features in this release.

Reader Expanders

- The F/2F Module is now available as a selection during the Add process, to automatically add the Inputs, Outputs and Trouble Inputs for the module.

User Import

- Extended characters are now imported correctly in User Names when importing Users from a CSV file.

Users

- Credentials can now be used as a field to search for User records.

Cameras

- H.264 or MJPEG RTSP streams can now be selected as Camera Types for direct Camera connections.

Access Levels

- Access Levels now contain a Commands field.

Services

- Services now contain a Commands field.

Schindler Integration

- The Site Code Format option 'Generic Wiegand' has been added to the Schindler HLI.

Licensing

- The Licensing page now shows the number of Licenses of each type currently being used, including Concurrent Client Licenses.

Issues Resolved (4.2.228)

The following issues have been resolved in this release.

- Access Level Outputs now correctly associate with Keypads in Keypad Groups for download to Controllers.
- Salto SHIP synchronized Access Level names now contain the full Database ID of the Access Level to eliminate conflict in Zone Names in Pro Access.
- Salto SHIP connected Doors can now be viewed in Floor Plans by all Operators, not the Admin Operator only .
- The Host dropdown in the Visitor Management Client Interface no longer overlaps the keyboard when there are multiple Hosts to be listed.
- Operators that are restricted to one or more Record Groups can now correctly add new Record Groups.
- When adding a new Input Expander, up to 16 Inputs can now be automatically added when clicking Save.
- Apartment records now have the correct Ready Output set when being added for the first time.
- Automated User Inactivity updates no longer create "Record Modified" History events.
- When adding a new Controller, selecting the Copy From Existing Controller now copies all records related to the original controller.
- Speed enhancements have been made to the loading of the Doors, Areas, Programmable Functions and Elevator Cars pages.

ProtegeGX Web Client (1.44.0.46)

New Features (1.44.0.46)

The following new features have been included with this release.

Report CSV Export

Reports run from the selection under the **Monitoring** tab can now be exported as CSV in addition to the existing CSV format.

User Access Level Schedule

Schedules can now be added directly to the Access Level on the User and can be configured on the Access Levels tab when navigating to Users | Users.

This feature now provides flexibility for Users that require the access to the same Doors within a selected Access Level, but at different times of day or week.

Issues Resolved (1.44.0.46)

The following issues have been resolved in this release:

- Operators with a database ID larger than 100 are now able to retrieve reports correctly.
- Resolved an issue where empty values in any of the User Card Inactivity fields caused SOAP to fail.
- The Polish version of the Web Client now sends the correct User Start and End Dates.
- User Credential Types now display correctly.

ProtegeGX SOAP Integration Service (1.5.0.24)

Issues Resolved (1.5.0.24)

The following issues have been resolved in this release:

- Operators with a database ID larger than 100 are now able to retrieve reports correctly.
- Operators with a database ID larger than 100 can now correctly make a call to the GetTableIDNameMapping schema.
- An Access Level can now successfully be added without assigning a Schedule and Access Direction to a Door.
- An Access Level can now successfully be added without any GroupData fields in the call.
- Access Levels are now correctly filtered by Site for assignment to a User.
- Doors are now correctly filtered by Site for assignment to a Door Group.
- Areas are now correctly filtered by Site for assignment to an Area Group.

ICT Data Sync Service (2.0.4.0)

Feature Enhancements (2.0.4.0)

The following enhancements have been made to existing features in this release:

Image ID Import

- Image Blob data is now a supported format for importing User photos into ProtegeGX.
- CPU Usage has been reduced making the import process more time efficient.
- Added warning events for Doors to advise the user they are missing compulsory fields from their mapping.

Issues Resolved (2.0.4.0)

The following issues have been resolved in this release:

- The Configuration Tool no longer crashes when the field mapping met certain conditions.
- The Conversions feature now saves correctly after a blank row is inserted.
- The Conversions feature now outputs the correct value instead of making unnecessary multiple conversions.
- Controller level records can now be imported successfully as the SOAP ParentID is being passed the ProtegeGX Controller ID instead of the Site ID.
- The Delete Import File When Complete option no longer deletes files prior to being synced if they are placed in the directory while the service is running.

- The Delete Import File When Complete option no longer logs the unnecessary 'Restart Sync Exception' error.

Version 4.2.216

New Features (4.2.216)

The following new features have been included with this release.

Data Sync Service V2

The Data Sync Service now provides a more flexible method for importing user data, allowing more fields to be imported and greater control over formatting of the input data.

As of ProtegeGX version 4.2.194, all previous versions of the Data Sync Service will not operate.

The Data Sync Service is now a licensed feature within the ProtegeGX software. Systems using the previous Data Sync Service must obtain a new license and upgrade their Data Sync Service installation, along with associated components.

For further information please see the [ICT Data Sync Service Upgrade Guide](#) and the [ICT Data Sync Service Integration Guide](#).

User / Card Inactivity

The ProtegeGX software now allows configuration of automatic functionality for the following actions after a selectable period of days, hours or minutes has elapsed with no activity:

- Disable of specific User Card
- Disable Of User Record
- Deletion of User Record

The following new fields are available to configure this feature:

Users -> Card Numbers

- **Card Last Used/Modified:** Shows date and time that the card was last granted access or modified by an operator within the system.
- **Inactivity Period:** Optional setting enabling you to set a time in minutes, hours or days to check for card activity/inactivity. If there is no card activity within the set time period the card is disabled.

Users -> User Disable/Deletion

- **User Last Active:** Shows date and time that the User was last granted access to a door or keypad within the system.
- **Disable Period:** Optional setting enabling you to set a time in minutes, hours or days to check for User activity/inactivity. If there is no User activity within the set time period the User Record is disabled.
- **Delete Period:** Optional setting enabling you to set a time in minutes, hours or days to check for User activity/inactivity. If there is no User activity within the set time period the User Record is deleted.

Global -> Sites -> Site Defaults -> User Card Inactivity Defaults

- **Disable Inactive User Card:** Optional setting enabling you to set a time period in minutes, hours, days, weeks, months, or years to test for User Card inactivity. Any new User added to the system will automatically have these defaults applied.

Global -> Sites -> Site Defaults -> User Inactivity Defaults

- **Disable Inactive Users:** Optional setting enabling you to set a time period in minutes, hours, days, weeks, months, or years to test for User inactivity. Any new User added to the system will automatically have these defaults applied.

- **Delete Inactive Users:** Optional setting enabling you to set a time period in minutes, hours, days, weeks, months, or years to test for User inactivity. Any new User added to the system will automatically have these defaults applied.

Periodic Report File Export

All Report types can now be configured to periodically export a file, in addition to being sent as an email.

The export can be performed daily at a selected time, or periodically. This is particularly useful for exporting report data (such as Time and Attendance data) to third party systems.

Feature Enhancements (4.2.216)

The following enhancements have been made to existing features in this release.

ProtegeGX Software

End User License Agreement

- The ProtegeGX EULA agreement has been updated, this will be displayed during the installation process.

Users

- **Access Levels:** The User Interface will now allow multiple instances of the same access level with different expiry times in the same user to be entered.

Credentials

- **Raw Read Events:** New Events for Credentials have been added, allowing display of invalid credential data equivalent to a raw card read.

Salto SHIP Integration

- **User Expiry:** The Salto tab for Users now contains User Expiry start and end times that can be used.

Apartments

- **Batch Add:** Apartments can now be batch added to the system.

System

- **Manual Event DB Backup:** Event Database backups can now be started from the ProtegeGX User Interface. The files can be saved locally to disk, or to a mapped network path, or to an FTP server.

ProtegeGX Web Client

Users

- **User / Card Inactivity:** The Web Client will display the User / Card inactivity fields as described in the Feature Enhancements for this version of the ProtegeGX Software.

ProtegeGX SOAP Service

Record Template Requests for Data Sync Service

- The Soap Service will now expose the template for all records via the TableSchema API. This is used by the Data Sync Service to allow full flexibility in mapping records for import.

Issues Resolved (4.2.216)

The following issues have been resolved in this release.

ProtegeGX Software

Reports

- The All Visitors by Date Report now generates results.
- User Reports are now filtered by the operator Record Group before an email is sent.
- Attendance Reports now email correctly even if Users in the User List for the report have been deleted.
- The Cards About To Expire User Report no longer includes expired user records.
- Email reports containing non-alphabetical characters (e.g. ':') are now sent correctly.
- Central Station Report now correctly shows the ID for Expander Trouble Inputs.
- 64 bit Systems can now load greater than 2GB of event data when running reports

Users

- The Graphic View now correctly shows door access periods when the 'All Doors' option is selected in the user Access Level

Function Codes

- The Action Group can now be correctly deleted from the Function Code.
- Function Code Record History now contains all modifications

Status Pages

- The Status Page Event view now loads recent events more quickly.

Trouble Inputs

- The Trouble Input copy function now copies the correct Input value.

Salto SHIP Integration

- Potential duplication of Door Groups is now resolved by the addition of up to 6 digits of Database ID in the exported Zone name.

Controllers

- Copying from an existing controller now correctly copies associated Inputs, Outputs, Trouble Inputs and Keypads.

Apartments

- Controller health status is now correctly cleared when updating Apartment Keypads.
- Apartment Users are now not shown in the regular Users list

Version 4.2.201

New Features (4.2.201)

The following new features have been included with this release:

Function Codes

This feature allows you to specify a single key-press Function Code (0-9) plus credential sequence at a specific reader to allow a user to perform a specific function, e.g. to arm an Area or latch unlock a Door.

Any manual commands possible in the software can be achieved with a Function Code.

Scenarios include:

- Cleaners using a Function Code to disarm all internal doors to Latch Unlocked so as not to have to badge/PIN at each door, and to prevent door alarms.
- Users using a Function Code to turn on/off all lights in a building at a reader.
- Users entering a Function Code to prevent timing out when triple badging plus entering a PIN to arm a building.

To set up a Function Code:

- In the Sites | Function Codes menu, add a name, assign it a digit from 0-9, and select colors to show acknowledgment (Start of Function, Success, Failure) at the reader.

Note: Function Code LED colors require PRT-RDM2-DIN firmware 520 or above, and PRX-TSEC reader hardware version 100 or higher with firmware 228 or above.

- Add an Action by selecting a Device Type (Door, Area, Output), and assigning an Action, Schedule, and Timeout.
- In the Doors menu, assign the Function Code to a door. Add the Action for the door (e.g. Lock), and select the side(s) of the door it may be used on.

Inovonics Wireless Receiver Module

- The new Inovonics Wireless Receiver Module (PRT-IVO-IF) facilitates integration between ProtegeGX and Inovonics wireless devices. It works with the Inovonics EN4200 EchoStream repeater to translate incoming Inovonics signals so they are understood by Protege controllers.

Key features of the PRT-IVO-IF module include:

- The ability to connect to the ProtegeGX controller via RS-485 network or Ethernet
- A web interface for easy network setup and boot mode for firmware updates
- Firmware upgrade via Trivial File Transfer Protocol (TFTP)
- The linking of Inovonics devices, e.g. wireless PIRs and remotes, to inputs
- The linking of Inovonics remotes to users for access control

For further information, please refer to the Inovonics Wireless Receiver Module Installation Manual, available on the ICT Website (<http://www.ict.co>).

Arkiv Video Management System Integration Service

- The Arkiv VMS now integrates with ProtegeGX via the ProtegeGX Arkiv Video Integration Service. The integration service enables control of Arkiv VMS cameras and the viewing of live and historical video footage via the ProtegeGX user interface.

Further details on this service can be found on the ICT Website (<http://www.ict.co>).

Axxon Video Management Integration Service

- The Axxon VMS now integrates with ProtegeGX via the ProtegeGX Axxon Video Integration Service. The integration service enables control of Axxon VMS cameras and the viewing of live and historical video footage via the ProtegeGX user interface.

Further details on this service can be found on the ICT Website (<http://www.ict.co>).

Feature Enhancements (4.2.201)

The following enhancements have been made to existing features in this release:

ProtegeGX Software

Access Levels

- Access Levels can now be qualified by the direction a user can pass through a door (Entry, Exit, or Both) in the Doors and Door Groups lists.

Areas

- Ready Output and/or Ready Output Group can now be configured to turn on when all inputs or trouble inputs in an area are closed and the area is ready for arming.
- Pressing Stay arm or Force arm again on a keypad once Stay arming or Force arming has started will now switch to Instant Stay arming or Instant Force arming, respectively.

Central Station Reporting

- SIA over IP (DC09) and CID over IP (DC09) have been added to the ReportIP service.
- Area, user, input and trouble input database IDs are now included in the packet sent to ArmorIP when reporting an event.

OTIS Integration Changes

- Call Registration is now supported for OTIS elevator integration.
- Special user features (Users | Users | Options) are now supported for OTIS elevator integration. These include: User is a VIP, Vertigo, Split Group Operation, Vertigo 2, Cart Service and CIM Override.
- Dispatch Reporting for OTIS elevator integration now includes the elevator car assigned to the user, as well as direction of travel.
- PIN entries are now supported for OTIS elevator integration.

Suprema Biometric Readers

- ProtegeGX integration with Suprema has been extended to include the use of Suprema version 2.x biometric readers (including the W2 model reader).

Reports

- Muster Reports now include the Duration option 'Last 4 weeks'.
- File Export is now available for Reports. This feature can be configured in a similar manner to E-mail Reports, and is designed for automatic export of a report (such as an Attendance Report) for use by a third-party system. For more information, please go to the ICT Website (<http://www.ict.co>).

Issues Resolved (4.2.201)

The following issues have been resolved in this release:

ProtegeGX Software

Reports

- The position of a column is now saved if it is moved after clicking 'Save Report Filter'.
- The Reports Grid View Filter String is no longer lost if entered before all events have finished loading.
- The sort order (ascending, descending) inside a column is now saved after clicking 'Save Report Filter'.

Controller Wizard

- The 'Assign Reader Beeper to Door Alarm Configuration' option is now used correctly.

Controller Copy

- Global Records that were not previously copied with the controller record are now copied.

Operators

- Guard or End User Role Preset based operators can now access Manual Commands correctly.

Status Pages

- Events lists with a user image shown will now display more quickly.

Users

- A User PIN can now be deleted.
- Events tab record count while loading has been reinstated.

Trouble Inputs

- The controller for Door Trouble Inputs is now set correctly when saving the record.

Doors

- Events tab record count while loading has been reinstated.

ProtegeGX Web Client

Users

- User Copy now works correctly.
- Batch Add Users now sets the Reporting ID correctly.
- A User PIN can now be deleted.

Operators

- Guard or End User Role Preset based operators can now access Status Pages correctly.

Version 4.2.194

New Features (4.2.194)

The following new features have been included with this release:

Keywatcher Touch Integration

ProtegeGX now allows integration with KeyWatcher Touch keyboxes in conjunction with the ProtegeGX KeyWatcher Integration Service. Users from ProtegeGX can now be synchronized to the KeyWatcher system, and selected events will be retrieved from the KeyWatcher system to allow a single point of management for both systems. License(s) are required.

For more information, refer to Application Note AN-220 KeyWatcher Touch Integration in ProtegeGX available on the ICT Website (<http://www.ict.co>).

User Record Modified History Report

Monitoring of operator behavior, whether for internal review or external reporting, is now available with the Record History Modified report. Each modification to a user, such as to card number or access level, will be shown chronologically in the report.

This report is available as a new Report Type under User Reports and is selectable at run time or can be configured to be run for specific time periods.

Users: PIN+1 Duplicate Checking

User records with the 'Treat PIN+1 as Duress' option selected are now checked for duplicate values upon being saved. If a duplicate value is found, an error message is now displayed and the PIN must be changed before the user can be saved.

Feature Enhancements (4.2.194)

The following enhancements have been made to existing features in this release.

- The Protege Mobile App correctly displays values for inputs, outputs, areas and doors from inside the ProtegeGX Web Client interface. This has now been extended to show event reports, and to allow push notification in the service. Refer to Application Note AN-201 ProtegeGX Push Notification Setup for instructions on configuring push notifications.

Issues Resolved (4.2.194)

The following issues have been resolved in this release:

ProtegeGX Software

- Non-printable ASCII characters in Credentials raw data events are now displayed as '.'.
- The 'summary'-type emailed report in Time & Attendance now shows user names in XLS attachment, as per thick client display.
- The Users | Attendance tab now no longer allows 'Delete Event' operations.
- PINs are now either shown or hidden in emailed user reports, based on the 'Show PIN' setting for the operator being emailed.
- Operators without administrator preset are now able to access all manual commands as per their specific role settings.
- Floors can now be controlled from floor plans for operators with the 'End User' preset.
- Recurrences on a weekly basis will now save correctly in Calendar Actions.
- Creating a reader expander on the Expander | Reader Expander page now automatically populates the door inputs (excluding bond sense).
- The issue has been resolved of controller bond sense input being automatically assigned to door programming and causing issues to door opening/closing events.
- The graphic view in Access Levels now displays correctly.
- The Event windows in status pages have been optimized to improve initial loading time.
- The problem with the Download Server stopping at midnight and requiring a manual restart has now been resolved.
- Controllers with recent changes are now prioritized to be downloaded immediately, speeding up response times for activity on site.
- Download calculation speed is now improved to a lower wait time when downloading to multiple controllers.
- The number of parallel downloads is now increased to 4 x number of machine processors, to lower wait time when downloading to multiple controllers.
- Resolved issue with record details not displaying correctly when using the Find tool in conjunction with sorting records by name.

ProtegeGX Web Client

- Columns on status pages now display full title width.
- Photo upload now works correctly for all sites.
- User reports now load correctly when the report contains access levels not in the operator's record group.
- Enterprise muster reports will now report correctly in multiple languages.
- Issue resolved for existing operators with a password policy applied.

- When saving access levels, operators are no longer prompted with an additional 'unsaved changes' dialog box.
- Non-admin operators can now add users correctly.
- Adding cards to new and existing users from the Monitoring | Events page now works correctly.
- Clicking on a display name in User Search now opens a new tab, not a new window in some browsers.
- The Export button in Reports pages now exports the events correctly.

Version 4.2.187

New Features (4.2.187)

The following new features have been included with this release:

VingCard VisiOnline Integration

Integration with the VingCard Visionline Wireless Locking System is now available for managing back of house staff access to electronic hotel locks directly from the ProtegeGX interface.

Event Report Dynamic Loading

The following new features have been added to the Event Report functionality in ProtegeGX:

- Events in Event Reports are now displayed continuously as the report is being executed and the report can be filtered or reordered during this process.
- A Cancel button has been added to the Event Report section. If the required event(s) have already been displayed, the Cancel button can be used to stop loading further events.
- The Unlimited setting no longer provides the limitation of loading 100,000 events. An *Out of Memory* warning will appear if an event report so large that it fills up all of the available memory on the client machine.
- Loading progress is displayed on the report while Events are still being loaded.

Programming Mode for Programmable Functions

A **Programming Mode** has been added to the Automation | Programmable Functions menu. This filtering functionality enables you to toggle between either a Local or Global Programming Mode.

- **Local** mode limits the inputs, outputs and areas connected to the same controller.
- **Global** mode displays all inputs, outputs and areas on the site with the Controller ID, Module Type and Module Address.

Feature Enhancements (4.2.187)

The following enhancements have been made to existing features in this release:

ProtegeGX Software

Record Group Filtering

- Operator events in event reports can now be filtered by record group.
- Live event windows in status pages are now filtered by both the record group(s) of the operator and the event filter in the selected event report.

Central Station Reports

- For every controller where cross-controller operations are being used, a Central Station Report now displays all inputs in areas that the reporting service is assigned to.

- The reporting output format for a Central Station Report has been simplified, and the CSV and HTM outputs have been adjusted to match more closely.
- Duplicate Reporting ID values are now allowed for areas in the same site that are reported on different services.

Record History

- The History tab for users, access levels and doors now record a complete history for every modification made by an operator. Any particular transaction can be viewed in further detail to assess the old value and new value of the field that has been modified.

Video Integrations

- All ProtegeGX video integrations now use an external video service which is installed and configured separately to ProtegeGX. The existing built-in integrations remain for legacy installations. Visit the ICT Website (<http://www.ict.co>) for full information on new and updated video integrations.

Events

- Adding, modifying and deleting symbols on floor plans now generates an event.

Maximized Client Window

- The time and date are now displayed in the bottom right hand corner of the ProtegeGX client window when maximized.

Controller Options

- The **Duplex Inputs** option can now be found by navigating to Sites | Controllers and selecting the Options tab.

Active Directory User Import

- A **Synchronization Period** setting is now available. This sets how frequently the Active Directory server is queried for User details.
- **Disable GX Users if AD Users are Disabled** and **Disable GX Users if AD Users are Deleted** settings are now available. This allows Users to be kept or removed from the ProtegeGX database as AD Users change, depending on site requirements.

ProtegeGX Web Client

- Calendar Actions can now be accessed by navigating to Sites | Calendar Actions.
- The new User Search feature enables operators to easily locate users within ProtegeGX based on details such as card numbers, access levels and other options attributed to users.

ProtegeGX Data Sync Service

- The EasyLobby Visitor Management System file format may now be imported for synchronization.

Issues Resolved (4.2.187)

This release resolves a number of issues:

ProtegeGX Software

- The **Name (Second Language)** field of both the Event Server and Download Server are showing correctly in the Estonian installation of ProtegeGX.
- Corrected an issue of displaying the incorrect Controller ID on Status Pages.
- Corrected an issue with Automation functions not being downloaded from the database to the controller.
- An Event Filter with the Record Group field assigned as **<not set>** can now be deleted.

- User Selected Floor on Elevator Using Floor Group events now display the floor name.
- Users already added to Cencon Locks will no longer generate User Already Exists errors in the Cencon Synchronisation Status.
- Report Map option reinstated in Contact ID Services.
- Operators without access to all record groups can no longer see the **Include All** options in access levels.
- The Event Purge feature no longer times out on large databases, which could cause the ProtegeGX Services to restart in certain conditions. An **Event Purge Time** setting is now available to schedule this operation at an optimal time.
- Report IP services now save the IP address field correctly when being modified after initial creation.
- Operator Logged In and Operator Logged Out events now show in the Event Search.
- Status lists now display the correct controller name in the Controller column on sites with more than one controller.
- Elevator records are now assigned to the correct host controller.
- Device status is now requested from all controllers when the ProtegeGX services are started. This in combination with PRT-CTRL-DIN firmware 752 or above will prevent the device status from becoming unknown in status pages.

ProtegeGX Web Client

- Multiple credential types can now be correctly created by navigating to Users | Credential Types.
- Custom Tabs (when navigating to Users | Users) can now be seen by all operators, including those restricted by record group.
- Photo ID images (when navigating to Users | Users) can now be added correctly. Under certain install conditions, the web client did not have access rights to upload the files.

ProtegeGX Data Sync Service

User PIN records are no longer cleared if no PIN is imported for a user. This allows a User PIN to be added from the ProtegeGX client after users have been imported.

Version 4.2.181

New Features (4.2.181)

The following new features have been included with this release:

Hold Up Area Walk Test

Designed for high security environments such as those found in the banking industry, this feature enables an area to require a walk test of the assigned inputs whenever it is disarmed. This allows you to test and verify specific inputs (including panic buttons) by fully arming and disarming the area to its 24 hour/ tamper state, without triggering false alarms. The results of the walk test are sent to the monitoring station you have configured in the Contact ID or Report IP service.

For detailed instructions on configuring the Hold Up Area Walk Test feature, please refer to the Application Note AN-197: ProtegeGX Hold Up Area Walk Test available on the ICT Website (<http://www.ict.co>).

Schindler Elevator Integration

Integration with Schindler elevator systems with the controller is now available in the ProtegeGX software. This integration includes support for Special Operating Mode (SOM) functionality.

For detailed instructions on configuring Schindler elevator HLI integration with SOM operation, please refer to the Application Note AN-196: ProtegeGX Schindler Elevator HLI Integration with SOMs available on the ICT Website (<http://www.ict.co>).

Suprema Biometrics Integration

Integration with Suprema biometric readers has been updated to include support for the W Series and all Suprema biometric readers running firmware version 2.

Credential Types

Credential types enable the ProtegeGX system to use different forms of user identification for access control. This feature extends the current functionality beyond the existing card, PIN and biometric formats to include credentials such as license plates and bar codes.

Credential types are created within ProtegeGX and applied to custom door types as the entry or exit reading mode. The third party device or software used to collect the credential data is configured as a smart reader with the data being sent through to the controller via the onboard RS-485 reader ports or via Ethernet.

This feature supports Unicode, UTF8, ASCII, Numeric, Hexadecimal, Wiegand and TLV data formats.

For detailed instructions on configuring Credential Types, please refer to the Application Note AN-XXX: ProtegeGX Credential Types available on the ICT Website (<http://www.ict.co>).

Language Support

Installations are now available with Greek, Russian and Italian as the second language option.

Mobile Web App Connectivity

The ProtegeGX SOAP Service (version 1.5.0.15) and the ProtegeGX Web Client (version 1.40.0.0) can now interface with the Protege Mobile App.

Feature Enhancements (4.2.181)

The following enhancements have been made to existing features in this release:

- Reporting IDs are no longer modified when migrating from version 3 to version 4 and monitoring stations will continue to receive the same IDs.
- When adding inputs and trouble inputs using the wizards, you can now select a default mapping scheme for assigning reporting IDs. If duplicate reporting IDs are found between linked controllers, health status messages are displayed.
- When generating central station reports, you can now reset all inputs and trouble inputs reported by a particular service to the values associated with a specific mapping scheme.
- A record group must be assigned to each event filter in event reports. Event reports no longer use their own record group to filter the events shown in reports.
- Added a **Pulse Reader Beeper on REX** option (Programming | Doors | Inputs). When enabled, the reader associated with the door produces a double beep when the REX button is pressed.
- Added a **Maintain REX** option (Programming | Doors | Inputs). When enabled, the door stays unlocked for as long as the REX button is held down.
- Added a **REX Time Different to Lock Time** option (Programming | Doors | Inputs). When enabled, you can configure the **REX Activation Time** which unlocks the door for a specified duration when unlocked using the REX button. This overrides the time set for the **Door Lock Activation Time**.
- Added a **Relock on Door Open** option (Programming | Doors | Options). When enabled, the door lock reactivates when the door sense detects that the door is open.
- Added a **Schedule Overrides Latch** option (Programming | Doors | Options). When enabled, the door operates based on the schedule assigned, even if the door is latched open.
- **Deny Entry** and **Deny Exit** options have been added for door lockdown.
- **Door Left Open Alarm Time** now handles values over 4 minutes.

- Added a **Read Non ICT Programmed Sector Data** option (Expanders | Smart Readers | Reader). When enabled, non ICT programmed sector data cards are processed when presented to Aperio Locks.
- You can now restart elevator HLI services using the **Restart HLI** button (Controllers | Configuration).
- Added a **Dynamic IP Address Update** option (Sites | Controllers | General). When enabled, the incoming IP address of the controller is detected by the event server, and the IP address field is automatically updated.
- Added a **Weekly Test Report** option (Sites | Controllers | Options). When enabled, the test report is sent once a week based on the day of the week selected.
- Added a **Report Short Duration Module Communication Failure** option (Sites | Controllers | Options). When enabled, module communication failure trouble events are always generated.
- Added an **Advanced UL Operation** mode (Sites | Controllers | Options). When enabled, the ProtegeGX system runs in UL compliance mode.
- Added a **Do Not Wait for Dial Tone When Modem Dials Out** option (Sites | Controllers | Options). When enabled, modem dialing occurs even when no dial tone is detected.
- Added a **TCP/IP Port** field to configure the TCP/IP port used when an intercom service is selected.
- The Alarm NZ IP reporting protocol is now referred to as CSV IP. The **CSV IP Username** and **CSV IP Password** fields have been added and display when the Report IP Service is selected and is set to use the CSV IP protocol.
- Added a **KLES Input LED** field (Programming | Inputs | Areas and Input Types). This field defines the LED of the PRT-KLES keypad used to display the state of the input in the specified area.
- Added a **Max Invalid PIN Entry Attempts** option (Expanders | Keypads | Configuration). This defines the maximum number of invalid PIN entries allowed before the user is locked out of the keypad.
- Added a **Show Time and Attendance Detail** option (Expanders | Keypads | Options 1). When enabled, the keypad displays time and attendance information for a specific duration when a user presents valid credentials at the associated card reader.
- **Lockout Keypad Time** now handles values beyond 4 minutes.
- Reader 1 and Reader 2 formats are now set to HID 26/34 Bit by default when creating new reader expanders.
- Added a **Dual Authentication Pending Output** option (Expanders | Reader Expanders | Reader). This defines the output that activates when the first credential is presented.
- Added a **Dual Authentication Wait Time** option (Expanders | Reader Expanders | Reader) menu. This defines the maximum time allowed between presenting the two credentials.
- Added an **Enabled Enhanced Smart Reader Outputs** option (Expanders | Reader Expanders | Reader). When enabled, you can control the LED and buzzer outputs of an ICT RS-485 reader as independent outputs when connected to the specified reader port.
- You can now reset loiter areas using manual commands when **User Loiter Time Expired** events are generated.

Issues Resolved (4.2.181)

This release resolves a number of issues:

- Event reports now successfully send to multiple operator emails.
- Resolved an issue with event reports being emailed with missing events.
- Corrected an issue with event reports showing a 'cannot find name' error.
- Corrected an issue with event reports not filtering correctly when emailed.
- Resolved an issue where exporting reader expander programming was not working correctly.
- Resolved an issue with door, area, and elevator car status not updating correctly in floor plans.
- Corrected an issue where controller encryption did not work correctly in certain circumstances.
- Central station report map now displays event codes in decimal.
- You can now import unlimited users from active directory.
- You are no longer able to accidentally cancel the controller wizard when creating a new site.
- The events tab now displays correctly in the Polish floor plan screen.
- Corrected an issue with incorrect options being disabled when a reader port is operating in ICT RS-485 mode.

- The bond sense input is no longer automatically assigned when doors are created using the controller wizard.
- Resolved an issue with the apartments menu not working correctly.
- Corrected an issue with REX inputs not being assigned correctly on migration.
- Muster reports now refresh correctly based on the refresh rate specified.
- Icons are now set up correctly when alarms are acknowledged.
- Reporting ID is now correctly calculated for users irrespective of record group associations.

Version 4.1.158

New Features (4.1.158)

The following new feature has been included with this release:

ProtegeGX Software:

- Card Template Editor can now copy user data from one custom field to another.

Feature Enhancements (4.1.158)

The following enhancements have been made to existing features in this release:

ProtegeGX Software

- The alarm pop-up window can be moved.
- Searching events from the Users window can now be canceled.
- When viewing events from the Users window they are now displayed as they are discovered, with the newest events at the top.
- When using event reports, record groups are added against the event filter and not the report itself, and event filters can have one or more record groups assigned when adding them to the report.

Issues Resolved (4.1.158)

This release resolves a number of issues:

ProtegeGX Software

- Improvements to performance when viewing status lists.
- The **Activate Access Level Output** option is now available when using ICT RS-485 readers.
- The **Reader Area Control Area** option is now hidden when using ICT RS-485 readers.
- When multi-selecting door records and updating fields, all records now update correctly.
- Camera pop-ups no longer conflict with alarm pop-ups.
- Cross controller logic control programmable functions are now correctly monitored by all controllers.
- When using the SALTO integration, the **Program Card** button can no longer be clicked until the user data is saved.
- Areas with only trouble inputs assigned are no longer hosted on the wrong controller.
- Selecting save repeatedly when updating doors no longer causes existing records to be overwritten.
- Event Reports no longer return only 1000 events when viewed by the Admin user.
- Operators with full access can now view the Doors page correctly.
- Large photos can now be down sampled without reducing quality.
- The time zone has been added to the Cencon Audit Trail report times.
- When multi-selecting user records and assigning an access level, all records now update correctly.

Version 4.1.150

New Features (4.1.150)

The following new features have been included with this release:

ProtegeGX Software

- A **Programming Mode** option has been added to the **Programming | Doors** menu. This option enables you to select either **Local** or **Global** Programming Mode.
- Using **Local** mode limits the Inputs, Outputs and Areas assigned to the Door to the items connected to the same Controller.
- **Global** mode displays all Inputs, Outputs and Areas on the site with the Controller appended to the record name.

ProtegeGX Web Client

- Filters can now be added when configuring the report setup for Event Reports.

Feature Enhancements (4.1.150)

The following enhancements have been made to existing features in this release:

ProtegeGX Software

- Legacy DVR DLLs have been removed from the ProtegeGX installation file. Please contact your DVR supplier or technical support if you require these files.
- REX and Door Position inputs are now automatically assigned when running through the Add Controller Wizard and the Add Reader Expander Wizard.
- Added an Unlock Door button to the direct camera pop-up window for user verification events.

ProtegeGX Web Client

- A Pay Code column has been added to the Time & Attendance Report.
- Column names can now contain the following brackets: ({}[]).
- Device names are now displayed as 'Not Set', if the name is empty/not found within a Status Page.

The number of results displayed per page for Event Reports has increased from 1000 to 5000.

Issues Resolved (4.1.150)

This release resolves a number of issues relating to the ProtegeGX Software, the ProtegeGX SOAP Service, and the ProtegeGX Web Client:

ProtegeGX Software

- The Door States on status pages have been updated to closely reflect the actual security of the door. If the Lock Output is activated but the door is not closed and/or sealed, the door displays as Not Locked. The Secure door state has been changed to Closed.
- Improved operation of event reports.
- Improved operation of status pages.
- Corrected an issue with duplicate CID codes assigned to inputs and trouble inputs.
- Corrected an issue with user reports batch printing for smart card printing.
- Corrected an issue with DNS name resolution that occurred when a name is entered in place of an IP address for a controller.
- Improved operation of user reports.
- Corrected an issue with VMS barcode sign out.
- Resolved an issue with Exacq DVR camera pop-up.

- Resolved an issue where trouble inputs would not download to some controllers under certain conditions.
- Time and Attendance daily report types now correctly modify shift data when saved.

ProtegeGX SOAP Software

- Improved operation of event reports and events on a status page.

ProtegeGX Web Client

- Ampersands now correctly display in record group names.
- Read only fields unlock when the [+] button is clicked in the roles page.
- Event Reports sort correctly by Event ID.
- The Roles page displays the record groups list correctly.
- Time & Attendance reports correctly display the totals when sorted by users.

Version 4.0.135

Feature Enhancements (4.0.135)

The following feature enhancements have been included with this release:

ProtegeGX Software

- Event loading in the User's menu now displays the number of available events in the event database and the current searching event IDs.
- Updated the Report IP service to allow for Poll Times of up to 24 hours.

Issues Resolved (4.0.135)

This release resolves a number of issues relating to the ProtegeGX Software and the ProtegeGX SOAP Service.

ProtegeGX Software

- Central Station Reports now display trouble input information.
- Corrected an issue where incorrect records were displayed by the Find function.
- You can now send multiple email reports of the same type simultaneously.
- Updated secondary menu group dropdown within the menu group programming page to correctly show menu groups instead of keypad groups.
- Updated the number of inputs created per apartment to 16.
- Reporting codes for trouble inputs no longer conflict with burglary input reporting codes.
- Resolved an issue where if a Cencon lock went offline, programming updates to online locks would not be possible.
- Corrected issues that caused some records to not download to all controllers correctly.
- Corrected an issue where Salto door groups could overwrite doors not generated by ProtegeGX, such as lockers.
- Programmable functions no longer display as Unassigned.
- The following records are now configured correctly during database migration:
 - Defer Warning Keypad Group
 - REX inputs
 - REN inputs
 - Existing Reporting IDs
 - Output Keypad Display Name
 - Keypad Trouble Input Name
 - Secondary Input Types

ProtegeGX SOAP Service

- Updated operator access rights to sites.
- Resolved an issue that caused user names to duplicate in Time and Attendance reports.

Version 4.0.128

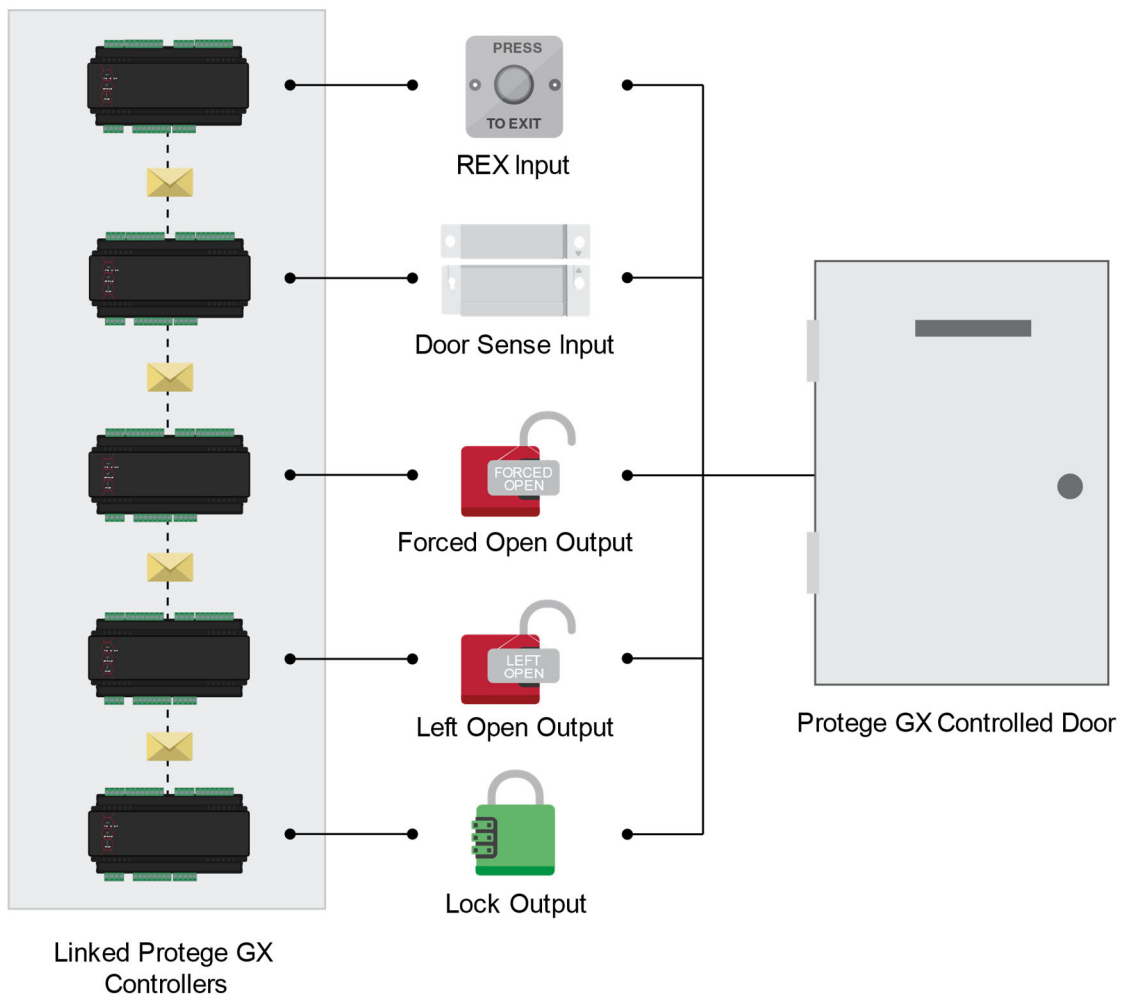
New Features (4.0.128)

The following new features have been included with this release.

Cross Controller Operations

This release of ProtegeGX introduces Cross Controller Operations. In ProtegeGX, Sites generally contain multiple Controllers that run independently of each other. Cross Controller Operations enables ProtegeGX Controllers to operate as one system and share hardware resources. This makes all physically connected items on a Controller accessible and usable by various functions and records within ProtegeGX.

For example, you are now able to assign Inputs for the REX and Bond Sense functions and Outputs for the Forced Open, Left Open and Lock functions from different Controllers to a single Door.



Cross Controller Operations happen entirely behind the scenes. Controller communications begin automatically when you assign items from different Controllers to the same record within ProtegeGX. The automated process reduces configuration and administration time.

How this Changes ProtegeGX

This feature has a major impact on many of the core functions within ProtegeGX. These functions include:

- **Outputs**
Outputs are still managed per Controller and must have their Module Type and Module Address defined in ProtegeGX. However, you can now assign outputs to any function within the site that can activate/deactivate an Output.
- **Inputs**
Inputs are still managed per Controller and must have their Module Type and Module Address defined in ProtegeGX. However, you can now assign inputs to any function within the site that can control an Input.
- **Trouble Inputs**
Trouble Inputs are located on a single Controller but you can now assign them to any area within the site.
- **Keypads**
You can now assign outputs to a keypad from any controller on site - not just the controller the keypad is connected to. Keypads must have a valid Area Group applied in order to determine which Controllers are required to communicate with each other for facilitating area access. This is because some Areas may have Inputs assigned to it from multiple Controllers.
- **Doors**
You can assign a Door's Inputs and Outputs from any Controller on site.
- **Areas**
You can assign Inputs and Outputs to an Area from any Controller on site.
- **Elevators**
For low level integrations, elevator car buttons require outputs to enable users to select a floor. Additionally, destination reporting uses inputs to monitor which buttons in an elevator car a user selects to access a floor. Cross Controller Operations enables you to assign the inputs and outputs used from any controller on Site.
- **Services**
Although some records are now able to operate independently of the hardware they belong to, all Services must have a controller specified when they are programmed. Despite operating off a single controller, the ProtegeGX Reporting Services are still able to report events from multiple Controllers.
- **Programmable Functions**
Programmable Functions are no longer located on a specific Controller, enabling you to use a mixture of Inputs, Outputs and Data Values from within the site.

For more information about Cross Controller Operations and how its functionality affects the operation of ProtegeGX, refer to the ProtegeGX Cross Controller Operations Upgrade Guide available in this release package. We strongly advise that this document is read through thoroughly before proceeding with the upgrade.

Calendar Actions

Calendar Actions are a licensed feature that enable you to create Door and Output actions that override previously programmed Schedules for a specified duration. These actions can be set as one-offs or set to recur every day, week, month or year.

This feature allows the simple configuration of the following scenarios:

- Building cleaners come in at a later time one day during the week and require the lights and the HVAC system to be turned on when they would otherwise be turned off.
- Some employees plan to come into work earlier than usual and require the internal doors to be free access, the lights to turn on and the HVAC system to activate.
- Additional staff training is carried out once a week on a Wednesday night for four weeks. On these days the internal doors must be free access, the HVAC must remain activated and the lights must stay on until 8pm.

For detailed instructions, please refer to the Application Note AN-179: Configuring Calendar Actions and available on the ICT Website (<http://www.ict.co>).

Avigilon Control Center Version 5 Integration

ProtegeGX now integrates with the Avigilon Control Center Version 5 NVR system.

This integration enables you to:

- View live video footage from programmed cameras.
- View historic and archived video footage.
- Embed cameras into a status page using the ProtegeGX Status Page Editor.
- Link a camera to a door, an input, an area, or any record using the filter and camera assignment.
- View live or archived video footage directly from an event associated with a camera.
- Launch a camera view window when a specific event occurs.
- View Storage Alarm, Motion Detect and Low Disk Space HLI events within ProtegeGX
- Send PTZ preset commands to the Avigilon Control Center system in response to a ProtegeGX event filter.

ProtegeGX integration with Avigilon Control Center V5 is facilitated by the ProtegeGX Avigilon Control Center V5 Video Service.

For detailed instructions on configuring Avigilon integration, please refer to the Application Note AN-175: ProtegeGX Avigilon Control Center V5 Integration available on the ICT Website (<http://www.ict.co>).

Inovonics Integration

ProtegeGX Inovonics integration is a licensed feature that enables you to use Inovonics' detection devices as ProtegeGX Input Expanders within ProtegeGX. Communication between the two systems is facilitated by Ethernet.

This integration enables you expand the reach of your ProtegeGX system and gives you to opportunity to take advantage of the Inovonics wireless detection system.

For detailed instructions on configuring Inovonics integration, please refer to the Application Note AN-183: ProtegeGX Inovonics Integration available on the ICT Website (<http://www.ict.co>).

Redwall Integration

ProtegeGX Redwall integration is a licensed feature that enables you to use Redwall laser scan detectors alongside the ProtegeGX system. Integration enables Redwall modules to operate as Protege Input Expanders within ProtegeGX. Communication between the two systems is facilitated by Ethernet.

Integration with Redwall detectors enables you to take advantage of a highly reliable detection system that is capable of detecting a moving object's size, speed, and distance using a unique algorithm.

For detailed instructions on configuring Redwall integration, please refer to the Application Note AN-181: ProtegeGX Redwall Integration available on the ICT Website (<http://www.ict.co>).

Apartments

Apartments are a licensed feature that enable you to control and manage access to apartment suites within condominium complexes. This software feature is used in conjunction with the ICT EliteSuite range. The EliteSuite range is designed for multi-dwelling apartment complex management. A variety of end user keypad options provide centralized management, and the unobtrusive design is the perfect fit for modern residences. You can add a maximum of 248 apartments in ProtegeGX.

For detailed instructions on programming, please refer to the Application Note: AN-184 Implementing Apartments in ProtegeGX available on the ICT Website.

Allegion Smart Reader Integration

Allegion integration is a licensed feature that enables you to use the Allegion AD-Series of wireless locks within ProtegeGX. Allegion integration uses wireless technology that enables ProtegeGX to communicate with the locks via panel interface modules (PIMs) that are connected to the ProtegeGX controller.

For detailed instructions on configuring Allegion integration, please refer to the Application Note AN-182: [Configuring Allegion Integration in ProtegeGX](http://www.ict.co) available on the ICT Website (<http://www.ict.co>).

Central Station Reports

Central Station Reports provide a report map for the Contact ID and Report IP services that can be supplied to the monitoring station.

Time Based Licensing

ICT have implemented time based licenses for all aspects of the ProtegeGX system. This enables ICT to provide demonstration licenses for specific feature upon request.

Microsoft SQL Server 2012 Support

ProtegeGX is now compatible with Microsoft SQL Server 2012 in the Standard, Enterprise, and Express editions.

Salto SALLIS Sector 13 Support

Salto SALLIS cards can be encoded with site/card information via the ICT Encoder Client. This defines the decryption key used with these cards. This ensures that the same card number is read by both SALLIS Wireless Locks and ICT Proximity Readers and removes the need for badging each card at a reader to retrieve their numbers.

For detailed instructions on configuring this, refer to the updated version of the Application Note AN-148: [Configuring Salto SALLIS Integration in ProtegeGX](http://www.ict.co) available on the ICT Website (<http://www.ict.co>).

Aperio Sector 13 Support

Aperio cards can be encoded with site/card information via the ICT Encoder Client. This defines the decryption key used with these cards. This ensures that the same card number is read by both Aperio Wireless Locks and ICT Proximity Readers and removes the need for badging each card at a reader to retrieve their numbers.

For detailed instructions on configuring this, refer to the updated version of the Application Note AN-147: [Configuring Aperio Integration in ProtegeGX](http://www.ict.co) available on the ICT Website (<http://www.ict.co>).

Feature Enhancements (4.0.128)

The following feature enhancements have been included with this release:

ProtegeGX Software

- Grid view report filtering now saves per report, per operator.
- Muster reports can now be sent to a specified email address based on an event.
- The controller name is now displayed in controller related events.
- The controller name and its database ID are now displayed in controller related events when emailed.
- All add, modify and delete events are now displayed in the event log for all records.
- Direct cameras now have the same functionality within ProtegeGX as DVR/NVR cameras.
- Once records have been added to an event filter, clicking the column header now sorts the column.

- Operator events are now able to generate alarms.
- A **Default User Expiry Date/Time** option has been added to the **Global | Sites | Display** menu. This option enables you to set a default start and end time for all user records.
- A **Display Users In Groups** option has been added to the **Global | Sites | Display** menu. This option enables you to view user records in group view from the **Users | Users** menu.
- A Background Update icon now sits in the ProtegeGX Status Bar and displays the active background operations. These operations include deleting an Access Level, a Schedule or a Salto Calendar. When one of these records is deleted, all other records tied to them cannot be modified. For example, if an Access Level assigned to a User is deleted, the User record won't be editable until the operation has completed.
- Various enhancements have been made to the Salto SHIP integration:
 - ProtegeGX now synchronizes with the Salto SHIP system much faster than in previous versions. This means that you are now able to add a user and program their card almost immediately. This only applies once an initial full download has taken place. Time for a full download is dependent on the size of the site. During this time, some integration features may be unavailable.
 - A Salto Status icon now sits in the ProtegeGX Status Bar. This enables you to view the current status of the integration.
 - A **User Can Override Privacy** option has been added to the **Users | Users | Salto** menu. When enabled, this option allows the User to access a room even when the door has been locked from the inside.
 - A **User can Override Lockdown** option has been added to the **Users | Users | Salto** menu. When enabled, this option allows the User to open the door if closed by lockdown.
 - A **User can Lockdown Door** option has been added to the **Users | Users | Salto** menu. When enabled, this option allows the User to initiate a Door lockdown.
 - An event is now generated when an operator cancels a Salto key.
 - You can now set the Salto Calendar option to **Not Set**.
 - A Salto Display Name field has been added to the Salto Doors, Salto Door Groups and Salto Calendars pages. This displays the name that the record has within Salto.
 - You can no longer add special characters to Salto record names within ProtegeGX. If you have applied special characters to any Salto record names, they are now automatically removed before the record is sent to Salto.
 - The multi-select function is now available for Salto Doors within the Salto | Doors menu.
 - The multi-select function is now available for Salto Door Groups within the Salto | Door Groups menu.
 - You can now add Salto Door Groups to a status page for control.
 - Record Group filtering has been implemented for Salto Doors, Salto Door Groups and Salto Calendars
- A Keypad Display Name field has been added for the following records:
 - Doors
 - Inputs
 - Areas
 - Trouble Inputs
 - Automation

This defines name displayed on the keypad. As the first 16 characters are what a user sees from a keypad, these characters should be as descriptive as possible to ensure items are easily identifiable.
- Due to the globalization of certain records within ProtegeGX, Record Group filtering has been implemented for:
 - Doors
 - Areas
 - Schedules
 - Menu Groups
 - Door Type
 - Input Types
 - Phone Numbers
 - Floors

- Elevator Cars
- The **Include All** options have been removed from the various Door, Area, Elevator and Floor Groups menus and are now configurable within an Access Level.
- All Door related Trouble Inputs have been removed from the Reader Expander and are now assigned directly to the Door. To facilitate this, a Door (DR) option can now be selected from the Module Type drop down for each of the Door Trouble Inputs. When this option is selected, the Module Address field is updated to allow you to select what Door the Trouble Input is associated with.
- A Keypad Groups section has been added to the Menu Groups menu. This enables you to filter menu groups based on the keypad group assigned to it and prevents downloading multiple menu groups per access level to legacy firmware.
- The User's Area Group option has moved from the Users | Users | General menu to its own tab within the Users | User menu.
- A Version 3 Settings section has been added to the Sites | Controllers | Configuration menu. This section is read-only and refers to the options that previously applied globally to a controller and is only relevant to PCB controllers.
- The Treat User PIN Plus 1 as Duress option is now configurable on an individual user level from the Users | Users | Options menu. If you are using a PCB controller with version 4.0 software or higher, enabling this option for one user enables it globally for all users.
- Global anti-passback has now been implemented. With several Controllers linked together, a User who badges at a Reader on one Controller to pass through an Entry Door into an Inside Area is able to badge at another Reader on a different Controller to pass through an Exit Door into an Outside Area. Due to this, the options for configuring anti-passback have moved from the Sites | Controllers | Options menu to the Programming | Doors | Advanced Options menu.
- As you are now able to assign any input from within the system to a door for the REX, REN, Door Sense, Bond Sense, and Beam sense functions, an Inputs tab has been added to the Programming | Doors menu to facilitate this. The original settings located in the Expanders | Reader Expanders menu are now ignored during normal operation. These options are only relevant for the offline operation of the Reader Expander.
- You can now set a ReportIP service as the backup for another ReportIP Service, a ContactID service or a SIA service.
- The Display options for Keypads have been moved from the Sites | Controllers | General menu to the Expanders | Keypads | General menu.
- All CID Mapping options have been removed from the services menu. Mapping is now generated using the Central Station Report function.
- Door types and input types are now created when a new site is added in ProtegeGX.
- A warning is now displayed when attempting to delete the last controller within a site.
- New Event Types have now been added to display the Reader Port if raw data is detected on a Reader Port that does not have a door associated with it.
- You are now able to apply multiple access levels to multiple users using the multi-select function.
- Changed all references to Avigilon within the user interface to Avigilon V4.
- An Options tab has been added to the Programming | Daylight Savings menu. This tab allows you to enable an option (Apply to All Controllers) that applies the daylight savings record to all controllers on site.
- As doors are now global across a site, a **Door <DOOR_NAME><DOOR_ID> Unlocked by Access** event has been added. This removes any association to a particular controller and prevents the **Output on by Door Function Unlock** event displaying for operators that do not have access to the record group of the controller the door's lock output belongs to.

ProtegeGX Web Client

- The User's Area Group option has moved from the Users | Users | General menu to its own tab within the Users | User menu.
- A Keypad Groups section has been added to the Menu Groups menu. This enables you to filter menu groups based on the keypad group assigned to it and prevents downloading multiple menu groups per access level to legacy firmware.
- The Include All options have been removed from the various Door, Area, Elevator and Floor Groups menus and are now configurable within an Access Level.
- A Keypad Display Name field has been added for Doors.

This defines name displayed on the keypad. As the first 16 characters are what a user sees from a keypad, these characters should be as descriptive as possible to ensure items are easily identifiable.

- The Treat User PIN Plus 1 as Duress option is now configurable on an individual user level from the Users | Users | Options menu.
- An Options tab has been added to the Programming | Daylight Savings menu. This tab allows you to enable an option (Apply to All Controllers) that applies the daylight savings record to all controllers on site.
- A Change Password button has been added to the home page.

Issues Resolved (4.0.128)

This release resolves a number of issues relating to the ProtegeGX Software, ProtegeGX SOAP Service and the ProtegeGX Web Client.

ProtegeGX Software

- If an alarm is generated while a previous alarm pop up is open, the newest alarm is now displayed within the pop-up window.
- The Save Changes prompt window no longer displays twice after creating a security level and navigating to another page.
- The **Use Antipassback** option in the **Users | Users | Salto** menu now functions correctly.
- The Controller's build number now displays correctly in the Auto Address window.
- The Salto Outputs tab has now been removed from the **Users | Users** and **Users | Access Levels** menus.
- Emailed muster reports are now generated correctly.
- Entering a shift type with an invalid start and end time no longer results in the error message appearing twice upon saving.
- Fonts are now generated correctly in the card template editor.
- When adding a user field to a card template, the list of fields is now displayed correctly in the French, Polish, Estonian and Spanish User Interfaces.
- Deleting a user field from the card template editor now operates correctly.
- Certain circumstances no longer cause the download server to repeatedly try to download.
- Salto and security level related events are now displayed for all operators.
- A majority of the ProtegeGX Operator events are now able to be set as alarms.
- ProtegeGX no longer requires you to manually enter an alarm time when viewing archived camera footage after viewing the live camera feed first.
- Unexpected REX events are no longer generated when REX is disabled.
- The Users | Attendance tab is now correctly updated after a manually added In/Out event is deleted.
- Salto Calendars, Schedule and Access Levels are now all defaulted when deleted or are no longer in use.
- The Cencon status icon is now hidden if Cencon is not enabled.
- If you resize the image column of a status page's event window, it no longer returns to the default size after navigating away.
- The access level expiry function now operates correctly.
- The <Not Set> preset has been removed for roles.
- Resolved an issue where Salto locks would be removed from Salto zones following a server reboot.
- Salto events now display correctly within ProtegeGX.
- The Salto Lock option is no longer for status lists if Salto integration has not been enabled.
- The Cencon Lock option is no longer for status lists if Cencon integration has not been enabled.
- An error is no longer displayed when attempting to open the Graphics View window from the **Users | Access Levels** menu when no access levels have been assigned.
- Cencon locks now update correctly.
- Items are now deleted properly from the Card Template Editor.
- The ProtegeGX DVR Service B now starts correctly following a ProtegeGX installation or upgrade.
- Exported records are now listed alphabetically.
- Multiple Time and Attendance reports can now be simultaneously emailed correctly.

ProtegeGX SOAP Service

- A non-default database server name is no longer cleared if you move between steps in the ProtegeGX SOAP Service installer window.

ProtegeGX Web Client

- Area names are now displayed correctly.
- The most recent events are now loaded first.
- Elevator cars now retrieved correctly by the elevator groups page.
- Security levels that are assigned to All Record Groups in ProtegeGX are now visible from the web interface.
- Event filter data for event reports now saves correctly.
- Status pages now support duplicate panels.
- Muster reports now operate correctly.
- Doors are now displayed correctly in the event filters page.
- User records are now saved correctly when they contain special characters.
- The Advanced Installer and Instant Arming options have been added to the Groups | Menu Groups page.
- Status lists now display records from all controllers correctly.
- Images added through the ProtegeGX software no longer display as missing image icons in the web interface.
- An error no longer occurs when changing whether a holiday repeats if more than one holiday is programmed.
- A scroll bar has been added to the History tab.
- The Keypad Groups list now populates correctly in the Security Levels | Manuals Commands menu.
- Dates are now shown correctly in attendance reports.
- Floor lists are now created correctly in the floor groups menu.
- The copy function now works as expected for holiday groups.
- The FindRecord function now selects the first record in the filtered list. Clicking Refresh selected the first record in the full list.
- The Acknowledged field displayed in a Status Page with Alarms now shows the correct time.

Previous Firmware Release History

ProtegeGX Controller Firmware Version 2.08.0848

New Features (2.08.0848)

Resistor Values

Added the ability to individually specify the resistor values connected to monitored Inputs and to specify more than two resistors if required.

Issues Resolved (2.08.0848)

The following issues have been resolved in this release.

- Fixed issue with Function Codes not correctly checking the entry/exit mode of the door type when configured to be usable for both Entry and Exit directions on the door.
- Improved the module update process to eliminate any input or output glitching when an update is performed.

ProtegeGX Controller Firmware Version 2.08.0843

New Features 2.08.0843

The following new features have been included with this release.

Additional Lock Outputs

Up to an additional 5 lock outputs or output groups can now be assigned to a door. Each additional lock output or output group can be configured with their own individual lock activation time, as well as a delay before activation time. This delay would allow the additional lock outputs to be activated in a staggered sequence. For information on configuring the additional Lock Outputs, please refer to the ProtegeGX Operator Reference Manual.

Feature Enhancements 2.08.0843

The following enhancements have been made to existing features in this release:

Doors

- Doors can now be associated with a new trouble input, Door Duress, when either a duress user's PIN or when a duress PIN code has been entered into the reader at the door. For information on configuring the Trouble Inputs, please refer to the ProtegeGX Operator Reference Manual.
- The command **DualCredPendingTime = #** configures the timeout for supplying credentials for authenticating a user, such as Card and PIN. In the Door commands, add this line with your required value of timeout in place of the # symbol.

Keypads

- Improved process for bypassing inputs and trouble inputs when logged into a keypad.
- Improved process for viewing doors, inputs, trouble inputs and outputs when logged into a keypad.

Inovonics Integration

- The Inovonics Integration can now support the Inovonics Repeater Module. For information on configuring the inputs and trouble inputs of the Inovonics Repeater Module, please refer to the Inovonics Wireless Receiver Module Installation Manual.

Services

- Improved feedback to the monitoring station for Report IP services configured with 'Enable Offline Polling', when the 'Report IP Reporting Failure' trouble input has been generated.

Dual Custody

- The command **CustodyPairEnforced = true** has been added to the Door Type commands which will update the antipassback status for both the Dual Custody Master and Dual Custody Provider. In addition, both the Dual Custody Master and Dual Custody Provider will be included in the area counting process.

Access Level Outputs

- Access level outputs can now be toggled between activations.
- Access level outputs can now be activated when reader port operates under 'Area Control' mode.

Issues Resolved 2.08.0843

The following issues have been resolved in this release:

- Resolved issue with the Log Message Retries and Log Reporting Failure options not working correctly for the Report IP service.
- Resolved issue with Modbus service unable to deactivate an input.
- Keypad no longer displaying incorrect language when accessing certain offline menus.
- Resolved issue with Defer Automatic Arming not working when deferring using a card badge.
- Activate Access Level Output now works correctly for reader port 2 when configured for Elevator Mode.
- Resolved issue with tSec readers operating in RS-485 mode not generating the Door Too Many Attempts trouble input correctly.
- Resolved issue with tSec readers connected to the onboard reader expander momentarily dropping offline after programming is downloaded.
- Improved efficiency of sending via backup service for Report IP when all channels have been determined as offline.
- Resolved issue with invalid PINs entered via readers reporting as raw card read events.
- Access level outputs now activate correctly as per configurations when triggered via Smart Readers.
- Corrected an issue where certain combinations of username and password supplied for CSV IP service would cause the controller to crash.

ProtegeGX Controller Firmware Version 2.08.0825

New Features (2.08.0825)

The following new features have been included with this release.

Card Usage Counting for Access Limits

User Cards can now be limited to a certain number of Access Granted swipes for a particular time period. This can be used to enable scenarios such as cafeteria line access or clubroom access based on membership policies. To enable this functionality, enter **LimitUsage=true** into the Access Level Commands.

- The command **UsesBeforeDisable = #** configures the number of uses for the Access Level before its disabled. In the Access Level Commands, add this line with your required value of uses in place of the # symbol.

- The command **UsageResetType = #** configures how long the Access Level usage will be Disabled for in terms of minutes (m/M), hours (h/H) or days (d/D). In the Access Level Commands, add this line with your required reset type in place of the # symbol.
- The command **UsageResetPeriod = #** configures the frequency on when the access level usage will be reset. In the Access Level Commands, add this line with your required value reset period in place of the # symbol.

Door Type Override in Access Levels

A new feature has been added to the system to allow a given Access Level to override the Door Type. The Doors in the Access Level will all use the Door Type specified in the Access Level, instead of the Door Type specified in the Door. This allows certain User or groups of Users to, for example only require a PIN at a door that would normally require Card and PIN.

- To enable this functionality, enter **AllowOverrideDoorType = true** into the Access Level Commands.
- The command **OverrideDoorType = #** can then be added to Door Type Commands. This specifies the Door Type to be used as the overriding Door Type.

Sequential Access Level Output Activation

Access Level Outputs are typically used to activate a specific feature in the building for a User or group of Users. A new feature has been added to allow multiple Access Level Output activations from a single card swipe, as long as the Access Level Start and End Expiry times create a continuous time period. This feature can be used to enable a variety of booking system scenarios where a User may request multiple bookings for all or parts of a facility in the same day.

For more information on this feature please see the relevant Application Note on the ICT Website (<http://www.ict.co>).

Feature Enhancements (2.08.0825)

The following enhancements have been made to existing features in this release:

Elevators

- The command **FloorAccessCheckCar = true** has been added to the Controller commands which allows Floor access to be granted based on all of the User's Access Levels, as well as the Elevator being used.

Inovonics Integration

- The Inovonics Integration can now associate low battery states for wireless devices with Trouble Inputs, as well as generating Events. For information on configuring the Trouble Inputs, please see the Inovonics Integration Module Installation Guide.

Access Level Outputs

- Currently active Access Level Outputs will now be turned off if the Access Level is removed from the User that activated the Output, or if the Expiry Time is updated to be outside the current time.

Issues Resolved (2.08.0825)

The following issues have been resolved in this release:

- Fixed an issue where a Report IP service that fails over IP and switches to PSTN for back-up would not correctly open the "Report IP reporting failure" trouble zone.
- Fixed an issue where users with credential programming that varied greatly in length from the credentials of other users would not always be found when their credentials were submitted. This did not affect facility/card numbers or PINs, nor credentials of similar length.
- Fixed an issue where under certain conditions, if a user badged at a door to which they did not have access the controller would restart.
- Stay Arming from a keypad is now possible when Inputs have been bypassed.

- Resolved an issue with a 'Module requires an update' being generated incorrectly for Outputs and Zones in a Cross Controller Configuration.
- Function Codes now work correctly when the Door Type has been set to Card and PIN.
- Modules are now able to register successfully behind the Module Network Repeater after it was previously registered directly with the controller (and vice versa).
- Schedules now work correctly for those that are valid across the midnight threshold.
- Inputs 9 through to 16 now working correctly for the F/2F module after performing a module update.
- Resolved an issue where processing a numeric credential greater than half the length defined in the Credential Type would cause a Controller restart.
- Over Current Trouble Input is no longer triggered incorrectly on the Single Door Controller with PoE.
- Feedback is now provided when a User fails to gain access after validating against the Fallback Door Type.
- The Inovonics Integration Module Input States are now being set correctly after a module update for the first 8 inputs.
- Valid Credentials are no longer interpreted as Raw Credential reads under certain conditions.

Contact

Integrated Control Technology welcomes all feedback.

Please visit our website (<http://www.ict.co>) or use the contact information below.

Integrated Control Technology

P.O. Box 302-340
North Harbour Post Centre
Auckland
New Zealand

4 John Glenn Ave
Rosedale
North Shore City 0632
Auckland
New Zealand

Phone: +64-9-476-7124

Toll Free Numbers:

0800 ICT 111 (0800 428 111) - New Zealand

1800 ICT 111 (1800 428 111) - Australia

1855 ICT 9111 (1855 428 9111) - USA/Canada

Email: sales@ict.co or support@ict.co

Web: www.ict.co



APAC

Integrated Control Technology Limited
4 John Glenn Avenue, Rosedale, Auckland 0632
PO Box 302-340, North Harbour, Auckland 0751, New Zealand
Email: sales@ict.co Toll Free: (0800) 428 111 Phone: 64 (9) 476 7124

AMERICAS

Integrated Control Technology (USA) LLC
5265 S Rio Grande Street, Suite 201, Littleton, CO 80120
Email: ussales@ict.co Toll Free: (855) 428 9111 Phone: 720 442 0767

EMEA

Integrated Control Technology (Europe) Limited
St Mary's Court, The Broadway, Amersham, HP7 0UT, UK
Email: emeasales@ict.co Phone: 44 0 1494 590494

Designers & manufacturers of integrated electronic access control, security and automation products.

Designed & manufactured by Integrated Control Technology Ltd.

Copyright © Integrated Control Technology Limited 2003-2018. All rights reserved.

Disclaimer: Whilst every effort has been made to ensure accuracy in the representation of these products, neither Integrated Control Technology Ltd nor its employees, shall be liable under any circumstances to any party in respect of decisions or actions they may make as a result of using this information. In accordance with the Integrated Control Technology policy of enhanced development, design and specifications are subject to change without notice